

BLOUBERG MUNICIPALITY

PROJECT NUMBER: BM05/21/23

**ALLDAYS INTERNAL STREET AND STORMWATER
PHASE 2**

TENDER DRAWINGS

ISSUED BY :-



The Municipal Manager
Blouberg Municipality
PO Box 1593
Senwabarwana
0790

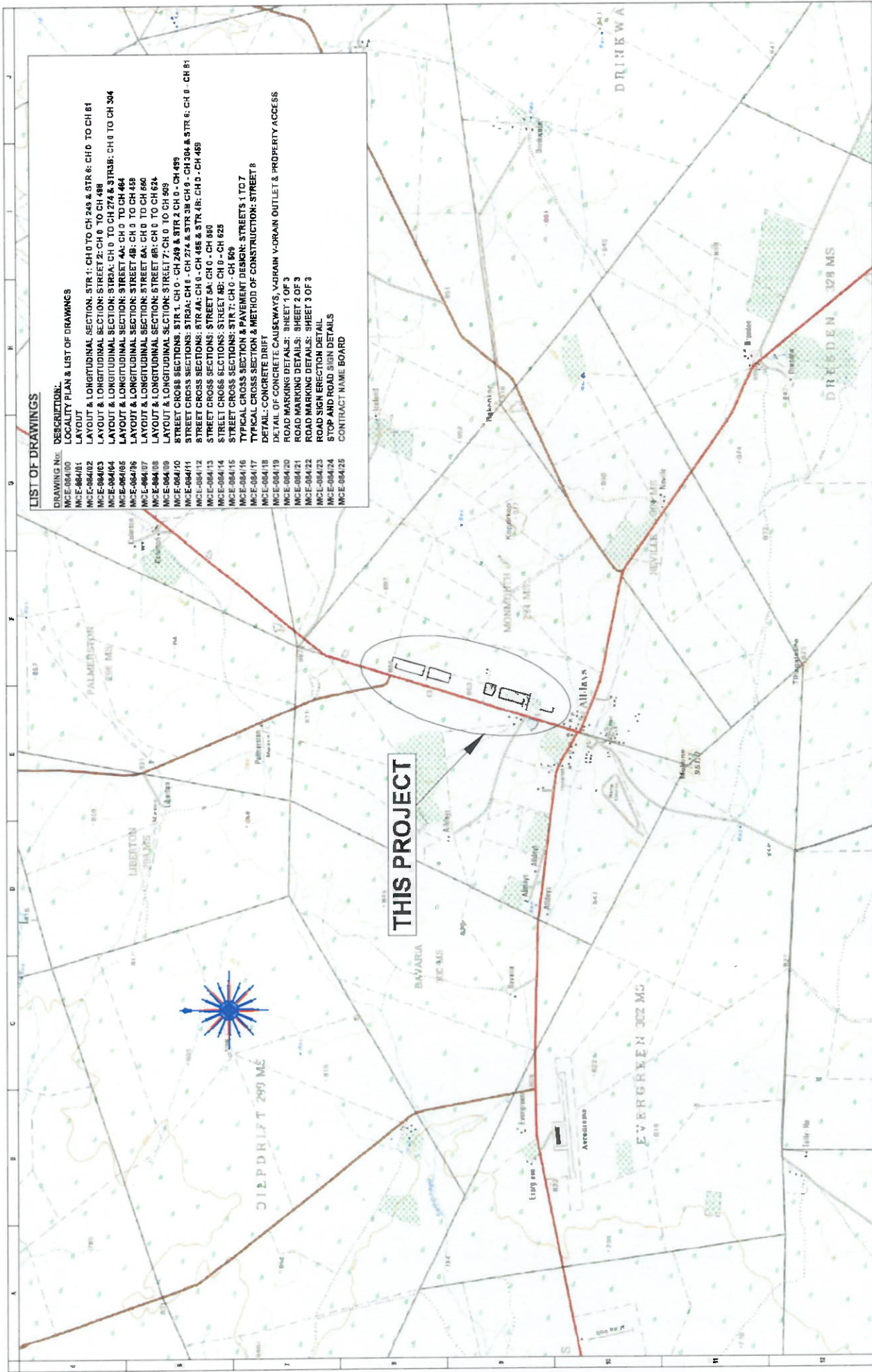
Telephone: (015) 505 7100
Facsimile: (015) 505 0296

PREPARED BY :



06 Hans van Rensburg Str
JCJ Limpro, Suite 7
P. O Box 4342
POLOKWANE
0700
Tel: 015 291 1262/1284
Fax: 015 291 1363

NAME OF TENDERER



LIST OF DRAWINGS

- DESCRIPTION:**
 LOCALITY PLAN & LIST OF DRAWINGS
 LAYOUT & LONGITUDINAL SECTION: STR 1: CH 0 TO CH 249 & STR 6: CH 0 TO CH 81
 LAYOUT & LONGITUDINAL SECTION: STREET 2: CH 0 TO CH 488
 LAYOUT & LONGITUDINAL SECTION: STR 3: CH 0 TO CH 274 & STR 3B: CH 0 TO CH 304
 LAYOUT & LONGITUDINAL SECTION: STREET 4A: CH 0 TO CH 464
 LAYOUT & LONGITUDINAL SECTION: STREET 4B: CH 0 TO CH 455
 LAYOUT & LONGITUDINAL SECTION: STREET 5A: CH 0 TO CH 590
 LAYOUT & LONGITUDINAL SECTION: STREET 7: CH 0 TO CH 524
 LAYOUT & LONGITUDINAL SECTION: STREET 7: CH 0 TO CH 509
 STREET CROSS SECTIONS: STR 1: CH 0 - CH 249 & STR 2: CH 0 - CH 488
 STREET CROSS SECTIONS: STR 3: CH 0 - CH 304 & STR 3B: CH 0 - CH 304 & STR 6: CH 0 - CH 81
 STREET CROSS SECTIONS: STR 4A: CH 0 - CH 408 & STR 4B: CH 0 - CH 455
 STREET CROSS SECTIONS: STR 5A: CH 0 - CH 590
 STREET CROSS SECTIONS: STR 7: CH 0 - CH 509
 TYPICAL CROSS SECTION & PAVEMENT DESIGN: STREETS 1 TO 7
 TYPICAL CROSS SECTION & METHOD OF CONSTRUCTION: STREET 8
 DETAIL OF CONCRETE CAUSEWAYS, V-DRAIN & DRAIN OUTLET & PROPERTY ACCESS
 ROAD MARKING DETAILS: SHEET 1 OF 3
 ROAD MARKING DETAILS: SHEET 2 OF 3
 ROAD MARKING DETAILS: SHEET 3 OF 3
 ROAD SIGN ERECTION DETAILS
 STOP AND ROAD SIGN DETAILS
 CONTRACT NAME BOARD

<p>PROJECT NUMBER: DM62123 ALLWAYS INTERNAL STREET AND STORMWATER PHASE 2 LOCALITY PLAN & LIST OF DRAWINGS</p>		<p>MORWA DRAWING NUMBER</p> <p>INTERNAL (PLAN SHEET) EXTERNAL (SECTION SHEET) EXPLANATION</p> <p>MCC-08400 - MCC-08400 - A1</p>	
<p>CLIENT: ALBERGERS MUNICIPALITY The Municipal Manager Bloemfontein Municipality Stormwater 0790</p>		<p>DATE:</p> <p>REVISIONS:</p>	
<p>PREPARED BY: ME Salks CHECKED BY: ME Salks APPROVED BY: ME Salks</p>		<p>DATE:</p> <p>REVISIONS:</p>	
<p>CLIENT:</p>		<p>DATE:</p>	



G. Maré van Rensburg Str
 P. O. Box 4342
 FLORENZA
 0790
 Tel: 015 291 4132/7364
 Fax: 015 291 1383



Station	CH	Y-Coord	X-Coord
STATION 0	11574.04	2506152.14	
STATION 1	11574.04	2506152.14	
STATION 2	11574.04	2506152.14	
STATION 3	11574.04	2506152.14	
STATION 4	11574.04	2506152.14	
STATION 5	11574.04	2506152.14	
STATION 6	11574.04	2506152.14	
STATION 7	11574.04	2506152.14	
STATION 8	11574.04	2506152.14	
STATION 9	11574.04	2506152.14	
STATION 10	11574.04	2506152.14	

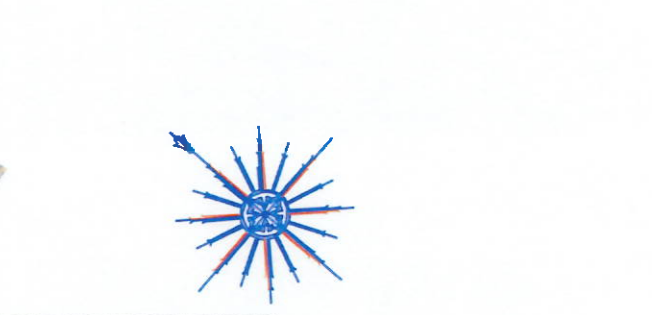
Station	CH	Y-Coord	X-Coord
STATION 0	11574.04	2506152.14	
STATION 1	11574.04	2506152.14	
STATION 2	11574.04	2506152.14	
STATION 3	11574.04	2506152.14	
STATION 4	11574.04	2506152.14	
STATION 5	11574.04	2506152.14	
STATION 6	11574.04	2506152.14	
STATION 7	11574.04	2506152.14	
STATION 8	11574.04	2506152.14	
STATION 9	11574.04	2506152.14	
STATION 10	11574.04	2506152.14	

Station	CH	Y-Coord	X-Coord
STATION 0	11574.04	2506152.14	
STATION 1	11574.04	2506152.14	
STATION 2	11574.04	2506152.14	
STATION 3	11574.04	2506152.14	
STATION 4	11574.04	2506152.14	
STATION 5	11574.04	2506152.14	
STATION 6	11574.04	2506152.14	
STATION 7	11574.04	2506152.14	
STATION 8	11574.04	2506152.14	
STATION 9	11574.04	2506152.14	
STATION 10	11574.04	2506152.14	



3 L NCHMARK Coordinate | 1st = WGS 29

Name	Y-Coord	X-Coord	Z-Coord
A1	-11938.514	2506504.917	859.064
A14	-11333.107	2508397.553	847.978
A7	-11473.790	2507910.257	852.765
GSO22100	-11594.278	2508193.780	850.929
GSO22101	-11479.330	2508010.320	851.802
GSO22102	-11775.787	2507008.508	855.832
GSO22103	-11896.607	2507118.093	857.219
GSO22104	-11866.620	2506664.375	857.769
GSO22105	-12002.959	2506747.868	859.697
GSO22250	-11339.382	2508804.553	847.967
GSO2251	-11311.795	2508616.198	847.405
GSO2252	-11509.750	2508473.879	849.554
GSO2254	-11459.808	2508381.874	848.856
GSO2255	-11568.588	2507960.740	852.860
GSO2256	-11619.444	2507815.854	855.004
GSO2257	-11777.279	2507275.401	856.605
GSO2258	-11886.762	2506888.135	857.479
GSO2260	-11291.678	2508398.254	847.753
TEST	-11576.345	2508028.851	852.262



3 L NCHMARK Coordinate | 1st = WGS 29

Name	Y-Coord	X-Coord	Z-Coord
A1	-11938.514	2506504.917	859.064
A14	-11333.107	2508397.553	847.978
A7	-11473.790	2507910.257	852.765
GSO22100	-11594.278	2508193.780	850.929
GSO22101	-11479.330	2508010.320	851.802
GSO22102	-11775.787	2507008.508	855.832
GSO22103	-11896.607	2507118.093	857.219
GSO22104	-11866.620	2506664.375	857.769
GSO22105	-12002.959	2506747.868	859.697
GSO22250	-11339.382	2508804.553	847.967
GSO2251	-11311.795	2508616.198	847.405
GSO2252	-11509.750	2508473.879	849.554
GSO2254	-11459.808	2508381.874	848.856
GSO2255	-11568.588	2507960.740	852.860
GSO2256	-11619.444	2507815.854	855.004
GSO2257	-11777.279	2507275.401	856.605
GSO2258	-11886.762	2506888.135	857.479
GSO2260	-11291.678	2508398.254	847.753
TEST	-11576.345	2508028.851	852.262



MORWA DRAWING NUMBER:

PROJECT NUMBER: BMR02/1/23

ALLDAYS INTERNAL STREET AND STORMWATER PHASE 2 LAYOUT:

SCALE: 1:100

A1

CLIENT: BLOUBERG MUNICIPALITY

The Municipal Engineer

Bouling Municipality

PO Box 1993

Bloberg

Telephone: (018) 635 7100

Fax number: (018) 696 0298

66 Home van Rensburg St

JCC Limpopo Suits 7

PO BOX 1993

POLKWANE

07700

Telephone: (018) 291 1232/1284

Fax: (018) 291 1285

DATE:

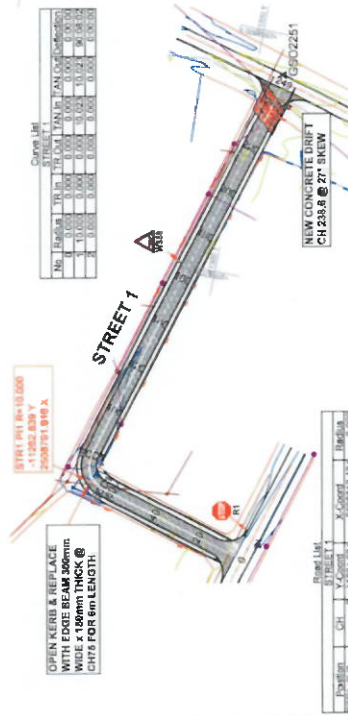
DESIGNED BY:

CHECKED BY:

SCALE:

PROJECT NUMBER:

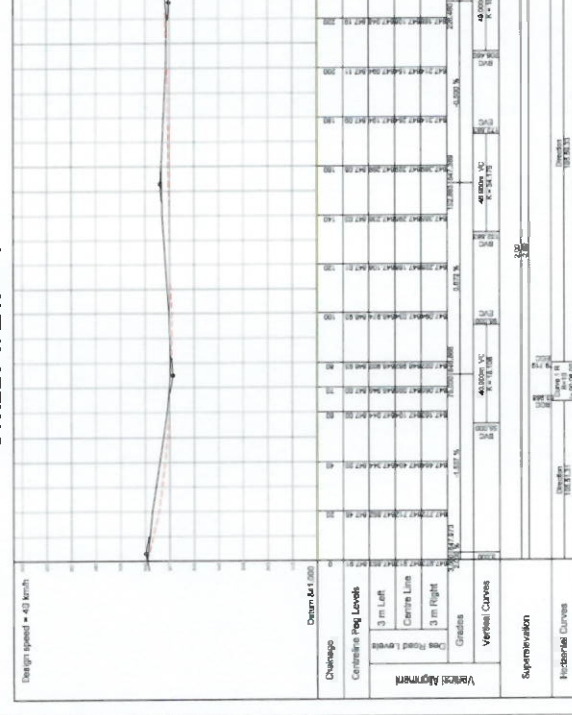
CLIENT:



Curve List

No.	Station	TRM	TRM (m)	LAN	LAN (m)	TAN	TAN (m)	CHORD	CHORD (m)
1	1133.54	0.00%	0.00	0.00	0.00	0.00	0.00	0.00	0.00
2	1133.54	0.00%	0.00	0.00	0.00	0.00	0.00	0.00	0.00
3	1133.54	0.00%	0.00	0.00	0.00	0.00	0.00	0.00	0.00
4	1133.54	0.00%	0.00	0.00	0.00	0.00	0.00	0.00	0.00
5	1133.54	0.00%	0.00	0.00	0.00	0.00	0.00	0.00	0.00

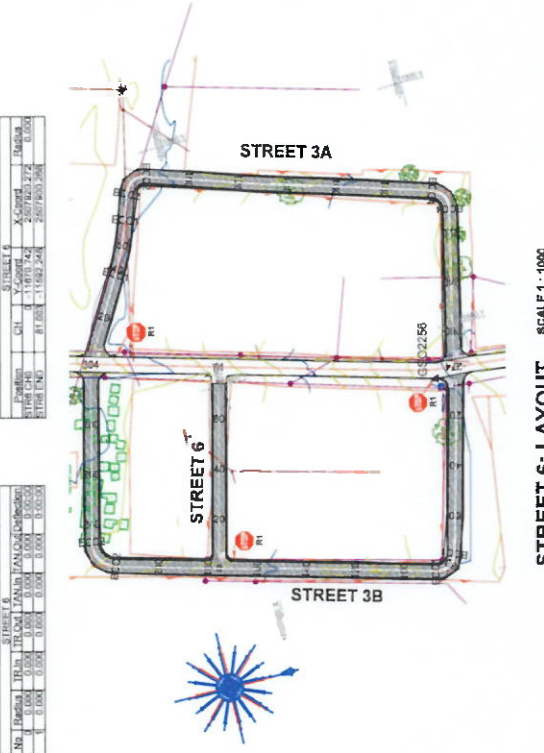
STREET 1: LAYOUT SCALE 1 : 1000



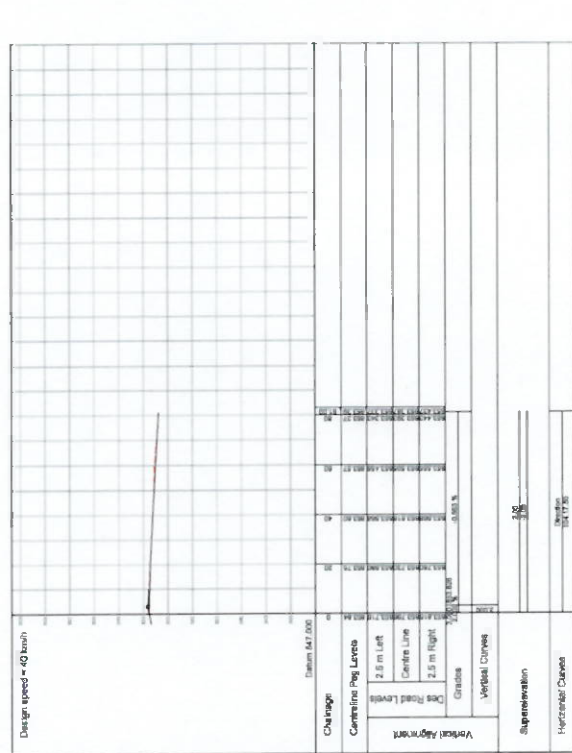
Change

Design speed = 40 km/h

Station	Vertical Curve	Superelevation	Horizontal Curve
1133.54	40000 VC	3%	
1133.54	40000 VC	3%	
1133.54	40000 VC	3%	
1133.54	40000 VC	3%	
1133.54	40000 VC	3%	
1133.54	40000 VC	3%	



STREET 6: LAYOUT SCALE 1 : 1000



Change

Design speed = 40 km/h

Station	Vertical Curve	Superelevation	Horizontal Curve
1133.54	40000 VC	3%	
1133.54	40000 VC	3%	
1133.54	40000 VC	3%	
1133.54	40000 VC	3%	
1133.54	40000 VC	3%	
1133.54	40000 VC	3%	

Coordinate List - WCS 20 LOCAL

Name	Y-Coord	X-Coord	Z-Coord
A1	-11938.614	2500654.917	850.064
A14	-11333.107	2500830.585	847.978
A7	-11473.794	2501791.267	852.795
S5022100	-11564.276	2503180.780	850.999
S5022101	-11478.333	2500810.320	851.892
S5022102	-11775.787	2507009.508	856.832
S5022103	-11866.633	2507118.093	857.219
S5022104	-11866.633	2500664.376	857.789
S5022105	-2002.864	2508747.868	859.697
S5022106	-11339.382	2508804.683	847.967
S5022107	-11659.793	2508418.188	847.405
S5022108	-11478.808	2508381.874	848.850
S5022109	-11668.688	2507960.740	852.890
S5022110	-11619.444	2507815.854	855.004
S5022111	-11777.278	2507216.401	859.005
S5022112	-11886.762	2506988.136	857.479
S5022113	-11261.078	2506388.254	847.763
TEST	-11516.348	2508283.851	852.262

Curve List

No.	Station	TRM	TRM (m)	LAN	LAN (m)	TAN	TAN (m)	CHORD	CHORD (m)
1	1133.54	0.00%	0.00	0.00	0.00	0.00	0.00	0.00	0.00
2	1133.54	0.00%	0.00	0.00	0.00	0.00	0.00	0.00	0.00
3	1133.54	0.00%	0.00	0.00	0.00	0.00	0.00	0.00	0.00
4	1133.54	0.00%	0.00	0.00	0.00	0.00	0.00	0.00	0.00
5	1133.54	0.00%	0.00	0.00	0.00	0.00	0.00	0.00	0.00

STREET 6: LAYOUT SCALE 1 : 1000



Change

Design speed = 40 km/h

Station	Vertical Curve	Superelevation	Horizontal Curve
1133.54	40000 VC	3%	
1133.54	40000 VC	3%	
1133.54	40000 VC	3%	
1133.54	40000 VC	3%	
1133.54	40000 VC	3%	
1133.54	40000 VC	3%	

MORWA CONSULTANTS

165 Main Street, North Bay, St. John's, NL A1A 1A1

Telephone: (919) 866 7100
Facsimile: (919) 866 0298

PROJECT NUMBER: BM05/23
ALWAYS INTERNAL STREET AND STORMWATER LAYOUT & LONGITUDINAL SECTION
STK 1: CH 0 TO CH 249 & STR 6; CH 0 TO CH 61

CLIENT: BLOUBERG MUNICIPALITY
The Municipal Manager
P O Box 243
Schoenbrunn
0700

DATE: 12/11/2023

SCALE: HOR: 1:1000 VER: 1:100

DESIGNER: [Signature]

CHECKER: [Signature]

DATE: 12/11/2023

SCALE: HOR: 1:1000 VER: 1:100

PROJECT NUMBER: BM05/23

CLIENT: BLOUBERG MUNICIPALITY

DATE: 12/11/2023

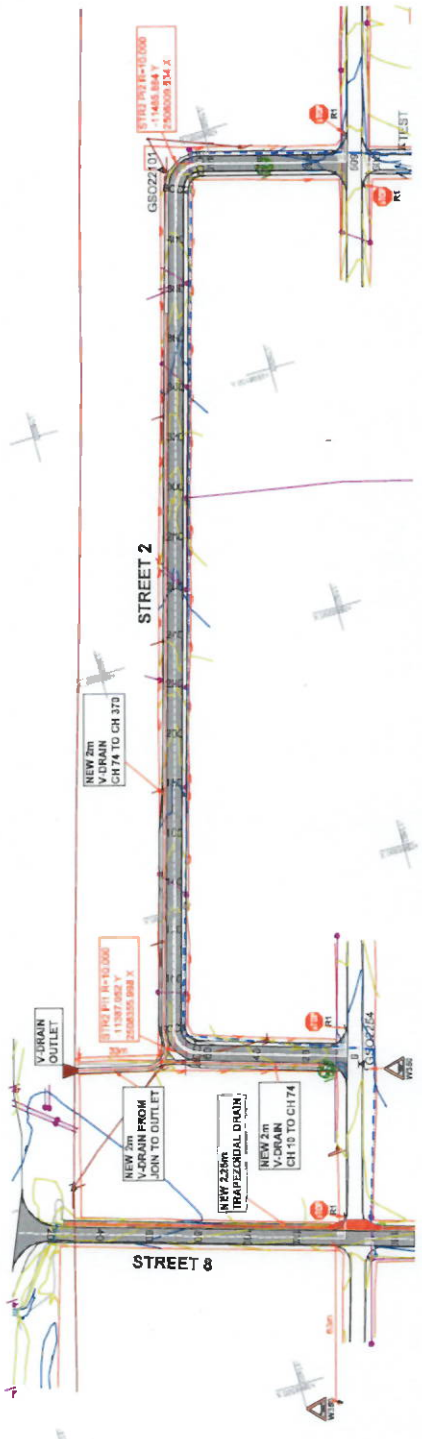
1 2 3 4 5 6 7 8 9 10 11 12

Station	CH	Y-Coordinate	X-Coordinate	Profile
1172+00	CH 1	1134.31	2081.18	11.000
1172+05	CH 1	1134.31	2081.18	11.000
1172+10	CH 1	1134.31	2081.18	11.000
1172+15	CH 1	1134.31	2081.18	11.000
1172+20	CH 1	1134.31	2081.18	11.000
1172+25	CH 1	1134.31	2081.18	11.000
1172+30	CH 1	1134.31	2081.18	11.000
1172+35	CH 1	1134.31	2081.18	11.000
1172+40	CH 1	1134.31	2081.18	11.000
1172+45	CH 1	1134.31	2081.18	11.000
1172+50	CH 1	1134.31	2081.18	11.000

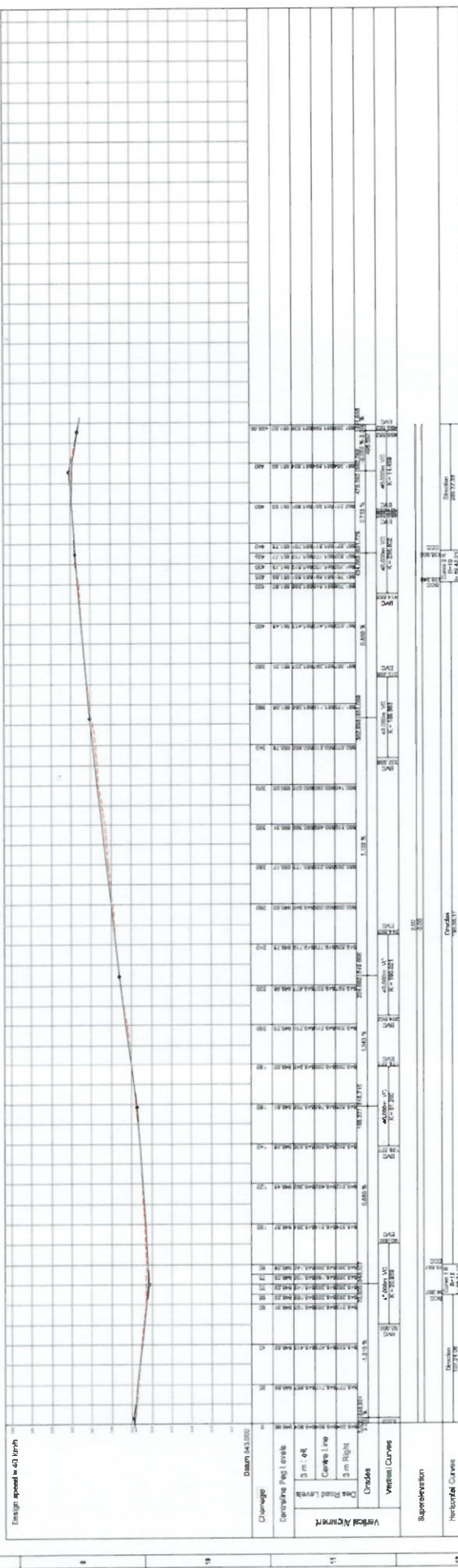
Sta	CH	Y	X	Profile
1172+00	CH 1	1134.31	2081.18	11.000
1172+05	CH 1	1134.31	2081.18	11.000
1172+10	CH 1	1134.31	2081.18	11.000
1172+15	CH 1	1134.31	2081.18	11.000
1172+20	CH 1	1134.31	2081.18	11.000
1172+25	CH 1	1134.31	2081.18	11.000
1172+30	CH 1	1134.31	2081.18	11.000
1172+35	CH 1	1134.31	2081.18	11.000
1172+40	CH 1	1134.31	2081.18	11.000
1172+45	CH 1	1134.31	2081.18	11.000
1172+50	CH 1	1134.31	2081.18	11.000

BENCHMARK Coordinate List - WGS 84 LOCAL

Name	Y-Coord	X-Coord	Z-Coord
A1	-11338.514	20803.817	849.084
A14	-11333.107	20803.977	847.378
A7	-11472.761	20791.026	852.765
59022100	-11994.278	20806.933	850.028
59022101	-11473.333	20803.102	851.852
59022102	-11778.791	20797.508	855.632
59022103	-11896.621	20771.809	857.219
59022104	-11866.621	20766.376	857.789
59022105	-12002.958	20760.478	859.087
59022200	-11338.365	20803.895	847.987
59022201	-11311.769	20805.108	847.495
59022202	-11403.753	20804.737	849.154
59022204	-11489.808	20803.874	848.896
59022205	-11698.588	20796.743	852.890
59022206	-11618.444	20791.854	856.034
59022207	-11777.274	20777.641	856.895
59022208	-11888.762	20803.136	857.478
59022209	-11291.678	20803.264	847.753
59022210	-11578.345	20802.881	852.762

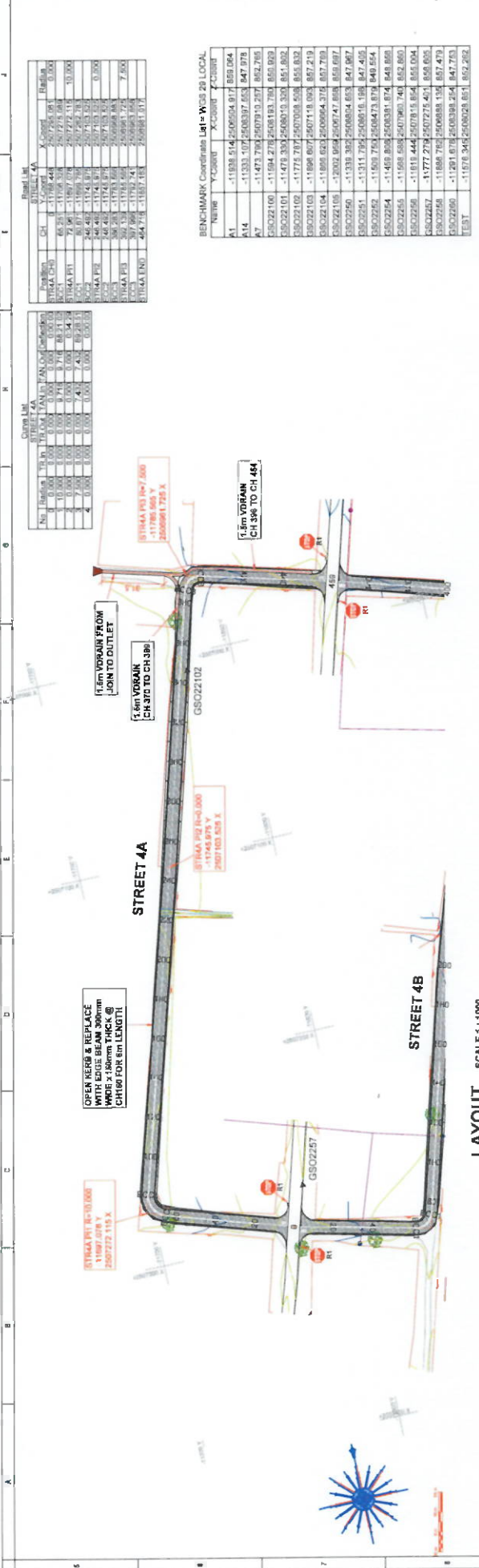


LAYOUT SCALE 1:1000



Change 0 to 498 SCALE: HORIZ - 1:500 VERT - 1:500

<p>PROJECT NUMBER: BMRW21023</p> <p>ALLOYS INTERNAL STREET AND STORMWATER</p> <p>PHASE 2</p> <p>LAYOUT & LONGITUDINAL SECTION:</p> <p>STREET 2, CH 0 TO CH 498</p>	<p>MORWA Municipal Engineering</p> <p>94, Heera Road, Borebore, 5101 P.O. Box 4342 POLLICORNE 0700</p> <p>Tel: 0144 805 0268 Fax: 0144 805 0268</p>	<p>CLIENT: BLOMBERG MUNICIPALITY</p> <p>The Municipal Engineer Borebore Municipality Borebore 0700</p> <p>Tel: 0144 805 0268 Fax: 0144 805 0268</p>	<p>DATE: _____</p>											
			<p>RESPONSIBLE ENGINEER: _____</p> <p>DESIGNER: _____</p> <p>DRAWN: _____</p> <p>CHECKED: _____</p> <p>APPROVED: _____</p>											
<p>REVISIONS:</p> <table border="1"> <thead> <tr> <th>NO.</th> <th>DESCRIPTION</th> <th>DATE</th> </tr> </thead> <tbody> <tr> <td> </td> <td> </td> <td> </td> </tr> </tbody> </table>	NO.	DESCRIPTION	DATE				<p>REFERENCE DRAWING DESCRIPTION:</p> <table border="1"> <thead> <tr> <th>NO.</th> <th>DESCRIPTION</th> <th>DATE</th> </tr> </thead> <tbody> <tr> <td> </td> <td> </td> <td> </td> </tr> </tbody> </table>	NO.	DESCRIPTION	DATE				<p>PROJECT NUMBER: BMRW21023</p> <p>ALLOYS INTERNAL STREET AND STORMWATER</p> <p>PHASE 2</p> <p>LAYOUT & LONGITUDINAL SECTION:</p> <p>STREET 2, CH 0 TO CH 498</p>
NO.	DESCRIPTION	DATE												
NO.	DESCRIPTION	DATE												



Point List

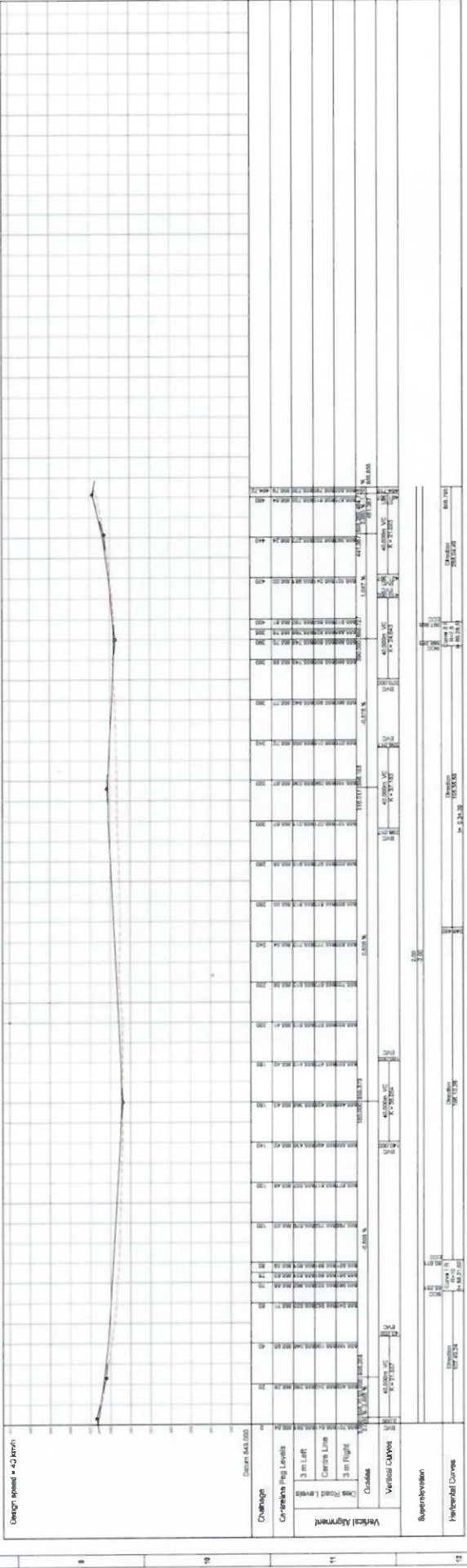
Station	CH	Y-Coord	X-Coord	Radius
STRA4A CH 3	CH	-11798.448	2077.925	0.00
STRA4A CH 4	CH	-11798.448	2077.925	0.00
STRA4A CH 5	CH	-11798.448	2077.925	0.00
STRA4A CH 6	CH	-11798.448	2077.925	0.00
STRA4A CH 7	CH	-11798.448	2077.925	0.00
STRA4A CH 8	CH	-11798.448	2077.925	0.00
STRA4A CH 9	CH	-11798.448	2077.925	0.00
STRA4A CH 10	CH	-11798.448	2077.925	0.00
STRA4A CH 11	CH	-11798.448	2077.925	0.00
STRA4A CH 12	CH	-11798.448	2077.925	0.00
STRA4A CH 13	CH	-11798.448	2077.925	0.00
STRA4A CH 14	CH	-11798.448	2077.925	0.00
STRA4A CH 15	CH	-11798.448	2077.925	0.00
STRA4A CH 16	CH	-11798.448	2077.925	0.00
STRA4A CH 17	CH	-11798.448	2077.925	0.00
STRA4A CH 18	CH	-11798.448	2077.925	0.00
STRA4A CH 19	CH	-11798.448	2077.925	0.00
STRA4A CH 20	CH	-11798.448	2077.925	0.00
STRA4A CH 21	CH	-11798.448	2077.925	0.00
STRA4A CH 22	CH	-11798.448	2077.925	0.00
STRA4A CH 23	CH	-11798.448	2077.925	0.00
STRA4A CH 24	CH	-11798.448	2077.925	0.00
STRA4A CH 25	CH	-11798.448	2077.925	0.00
STRA4A CH 26	CH	-11798.448	2077.925	0.00
STRA4A CH 27	CH	-11798.448	2077.925	0.00
STRA4A CH 28	CH	-11798.448	2077.925	0.00
STRA4A CH 29	CH	-11798.448	2077.925	0.00
STRA4A CH 30	CH	-11798.448	2077.925	0.00
STRA4A CH 31	CH	-11798.448	2077.925	0.00
STRA4A CH 32	CH	-11798.448	2077.925	0.00
STRA4A CH 33	CH	-11798.448	2077.925	0.00
STRA4A CH 34	CH	-11798.448	2077.925	0.00
STRA4A CH 35	CH	-11798.448	2077.925	0.00
STRA4A CH 36	CH	-11798.448	2077.925	0.00
STRA4A CH 37	CH	-11798.448	2077.925	0.00
STRA4A CH 38	CH	-11798.448	2077.925	0.00
STRA4A CH 39	CH	-11798.448	2077.925	0.00
STRA4A CH 40	CH	-11798.448	2077.925	0.00
STRA4A CH 41	CH	-11798.448	2077.925	0.00
STRA4A CH 42	CH	-11798.448	2077.925	0.00
STRA4A CH 43	CH	-11798.448	2077.925	0.00
STRA4A CH 44	CH	-11798.448	2077.925	0.00
STRA4A CH 45	CH	-11798.448	2077.925	0.00
STRA4A CH 46	CH	-11798.448	2077.925	0.00
STRA4A CH 47	CH	-11798.448	2077.925	0.00
STRA4A CH 48	CH	-11798.448	2077.925	0.00
STRA4A CH 49	CH	-11798.448	2077.925	0.00
STRA4A CH 50	CH	-11798.448	2077.925	0.00
STRA4A CH 51	CH	-11798.448	2077.925	0.00
STRA4A CH 52	CH	-11798.448	2077.925	0.00
STRA4A CH 53	CH	-11798.448	2077.925	0.00
STRA4A CH 54	CH	-11798.448	2077.925	0.00
STRA4A CH 55	CH	-11798.448	2077.925	0.00
STRA4A CH 56	CH	-11798.448	2077.925	0.00
STRA4A CH 57	CH	-11798.448	2077.925	0.00
STRA4A CH 58	CH	-11798.448	2077.925	0.00
STRA4A CH 59	CH	-11798.448	2077.925	0.00
STRA4A CH 60	CH	-11798.448	2077.925	0.00
STRA4A CH 61	CH	-11798.448	2077.925	0.00
STRA4A CH 62	CH	-11798.448	2077.925	0.00
STRA4A CH 63	CH	-11798.448	2077.925	0.00
STRA4A CH 64	CH	-11798.448	2077.925	0.00
STRA4A CH 65	CH	-11798.448	2077.925	0.00
STRA4A CH 66	CH	-11798.448	2077.925	0.00
STRA4A CH 67	CH	-11798.448	2077.925	0.00
STRA4A CH 68	CH	-11798.448	2077.925	0.00
STRA4A CH 69	CH	-11798.448	2077.925	0.00
STRA4A CH 70	CH	-11798.448	2077.925	0.00
STRA4A CH 71	CH	-11798.448	2077.925	0.00
STRA4A CH 72	CH	-11798.448	2077.925	0.00
STRA4A CH 73	CH	-11798.448	2077.925	0.00
STRA4A CH 74	CH	-11798.448	2077.925	0.00
STRA4A CH 75	CH	-11798.448	2077.925	0.00
STRA4A CH 76	CH	-11798.448	2077.925	0.00
STRA4A CH 77	CH	-11798.448	2077.925	0.00
STRA4A CH 78	CH	-11798.448	2077.925	0.00
STRA4A CH 79	CH	-11798.448	2077.925	0.00
STRA4A CH 80	CH	-11798.448	2077.925	0.00
STRA4A CH 81	CH	-11798.448	2077.925	0.00
STRA4A CH 82	CH	-11798.448	2077.925	0.00
STRA4A CH 83	CH	-11798.448	2077.925	0.00
STRA4A CH 84	CH	-11798.448	2077.925	0.00
STRA4A CH 85	CH	-11798.448	2077.925	0.00
STRA4A CH 86	CH	-11798.448	2077.925	0.00
STRA4A CH 87	CH	-11798.448	2077.925	0.00
STRA4A CH 88	CH	-11798.448	2077.925	0.00
STRA4A CH 89	CH	-11798.448	2077.925	0.00
STRA4A CH 90	CH	-11798.448	2077.925	0.00
STRA4A CH 91	CH	-11798.448	2077.925	0.00
STRA4A CH 92	CH	-11798.448	2077.925	0.00
STRA4A CH 93	CH	-11798.448	2077.925	0.00
STRA4A CH 94	CH	-11798.448	2077.925	0.00
STRA4A CH 95	CH	-11798.448	2077.925	0.00
STRA4A CH 96	CH	-11798.448	2077.925	0.00
STRA4A CH 97	CH	-11798.448	2077.925	0.00
STRA4A CH 98	CH	-11798.448	2077.925	0.00
STRA4A CH 99	CH	-11798.448	2077.925	0.00
STRA4A CH 100	CH	-11798.448	2077.925	0.00

BENCHMARK Coordinates (Lev = WGS 2011)

Name	Y-Coord	X-Coord	Z-Coord
A1	-11938.514	206050.917	855.064
A14	-11333.107	200397.653	847.978
A7	-11473.793	20079.027	852.795
S5022100	-11694.278	2008183.793	855.099
S5022101	-11478.393	2008103.328	855.832
S5022102	-11775.707	2007008.558	855.832
S5022103	-11696.607	2007118.028	857.219
S5022104	-11885.623	2006964.376	857.789
S5022105	-12002.954	2006747.808	858.687
S502250	-11338.382	2008804.853	847.987
S502251	-11311.794	2008916.186	847.405
S502252	-11569.765	2008473.874	848.854
S502254	-11489.808	2008381.874	848.868
S502255	-11698.698	2007960.748	852.880
S502256	-11818.444	2007816.854	855.004
S502257	-11772.279	2007276.461	858.605
S502258	-11886.782	2006884.136	857.479
S502260	-11291.618	2008388.264	847.753
TEST	-11578.345	2008028.881	852.282

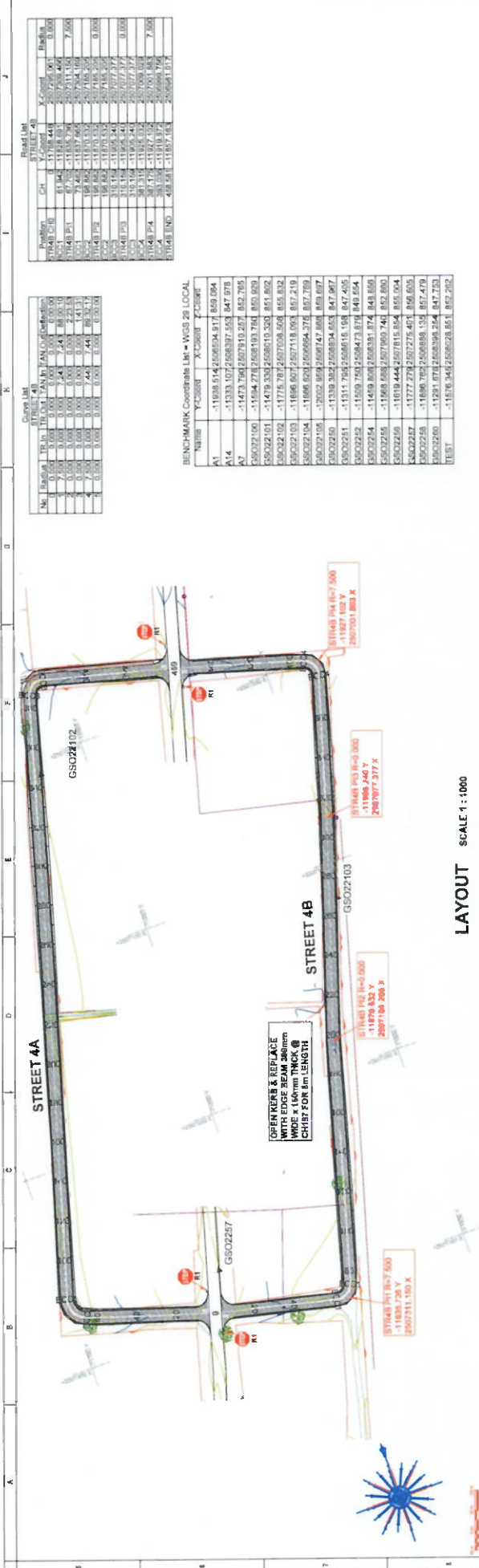
Open List

No.	Start	To	From	Length	Area	Perim.
1	0.00	0.00	0.00	0.00	0.00	0.00
2	0.00	0.00	0.00	0.00	0.00	0.00
3	0.00	0.00	0.00	0.00	0.00	0.00
4	0.00	0.00	0.00	0.00	0.00	0.00



Design 0 to 4B4 SCALE: HORIZ: 1:1000 VERT: 1:100

PROJECT NUMBER: BMS2123	PROJECT: ALLDAYS INTERNAL STREET AND STORMWATER LAYOUT & LONGITUDINAL SECTION: STREET 4A, CH 3 TO CH 4B4
CLIENT: BLOMBERG MUNICIPALITY The Municipal Manager Jodi Linn, Bloemfontein Municipality P.O. Box 4342 Pretoria 0001 Telephone: (018) 665 7100 Facsimile: (018) 666 2386	PROJECT: ALLDAYS INTERNAL STREET AND STORMWATER LAYOUT & LONGITUDINAL SECTION: STREET 4A, CH 3 TO CH 4B4
DATE: 2024/03/15	PROJECT: ALLDAYS INTERNAL STREET AND STORMWATER LAYOUT & LONGITUDINAL SECTION: STREET 4A, CH 3 TO CH 4B4
DESIGNER: M. B. B. B.	PROJECT: ALLDAYS INTERNAL STREET AND STORMWATER LAYOUT & LONGITUDINAL SECTION: STREET 4A, CH 3 TO CH 4B4
CHECKED: M. B. B. B.	PROJECT: ALLDAYS INTERNAL STREET AND STORMWATER LAYOUT & LONGITUDINAL SECTION: STREET 4A, CH 3 TO CH 4B4
APPROVED: M. B. B. B.	PROJECT: ALLDAYS INTERNAL STREET AND STORMWATER LAYOUT & LONGITUDINAL SECTION: STREET 4A, CH 3 TO CH 4B4
PROJECT: ALLDAYS INTERNAL STREET AND STORMWATER LAYOUT & LONGITUDINAL SECTION: STREET 4A, CH 3 TO CH 4B4	PROJECT: ALLDAYS INTERNAL STREET AND STORMWATER LAYOUT & LONGITUDINAL SECTION: STREET 4A, CH 3 TO CH 4B4
CLIENT: BLOMBERG MUNICIPALITY	PROJECT: ALLDAYS INTERNAL STREET AND STORMWATER LAYOUT & LONGITUDINAL SECTION: STREET 4A, CH 3 TO CH 4B4



LAYOUT SCALE 1 : 1000

Station	CH	X-Coord	Y-Coord	Radius
11448 CH0	0.00	11769.448	20071.000	0.000
11448 P1	0.74	11817.54	20071.151	7.000
11448 P2	1.48	11865.64	20071.302	14.000
11448 P3	2.22	11913.74	20071.453	21.000
11448 P4	2.96	11961.84	20071.604	28.000
11448 END	3.70	12009.94	20071.755	35.000

Name	Y-Coord	X-Coord	Z-Coord
A1	-1199.514	25665.94	817.869
A14	-1333.107	25683.97	853.847
A7	-1473.706	25679.19	857.785
GSO22100	-11594.278	25681.93	784.859
GSO22101	-11479.333	25680.10	861.862
GSO22102	-11775.787	25677.09	808.852
GSO22103	-11696.807	25677.18	808.219
GSO22104	-11696.803	25669.94	774.857
GSO22105	-21052.854	25697.47	809.897
GSO22106	-11339.342	25683.94	853.847
GSO22107	-11311.749	25686.15	848.405
GSO22108	-11559.749	25684.73	874.848
GSO22109	-11459.808	25683.81	874.848
GSO22110	-11668.668	25679.60	741.852
GSO22111	-11019.444	25678.15	854.855
GSO22112	-11777.278	25677.25	401.856
GSO22113	-11696.785	25668.19	857.479
GSO22114	-11291.878	25639.24	847.753
TEST	-11676.348	25682.85	852.282

No.	Radius	TR (in)	TO (in)	TA (in)	TA (in)	TA (in)	TA (in)	TA (in)	TA (in)
1	0.00	0.00	0.00	0.00	0.00	0.00	0.00	0.00	0.00
2	7.00	0.00	0.00	7.41	7.41	2.23	2.23	1.41	1.41
3	14.00	0.00	0.00	14.82	14.82	4.46	4.46	2.82	2.82
4	21.00	0.00	0.00	22.23	22.23	7.00	7.00	4.41	4.41
5	28.00	0.00	0.00	29.64	29.64	10.11	10.11	6.27	6.27
6	35.00	0.00	0.00	37.05	37.05	13.22	13.22	8.42	8.42

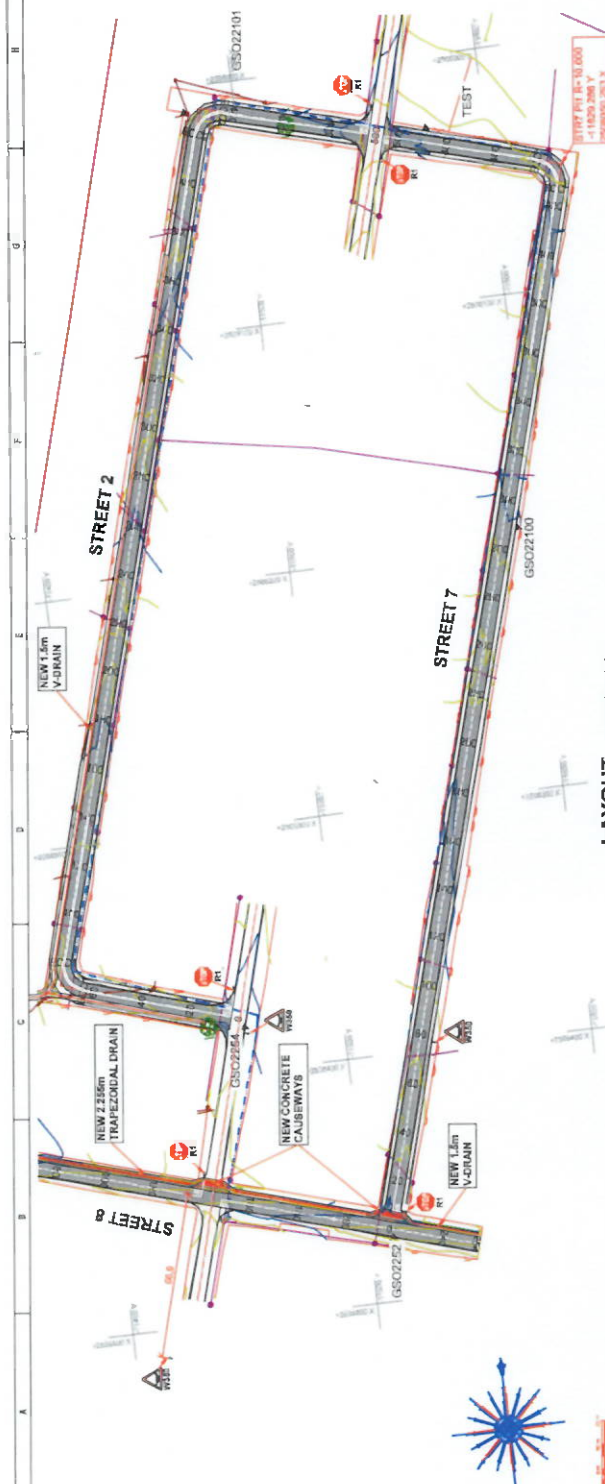
<p>Design speed = 40 km/h</p> <p>Vertical Alignment</p> <p>Horizontal Curves</p>	<p>Client: BLOMBERG MUNICIPALITY</p> <p>Project: ALDAYS INTERNAL STREET AND STORMWATER PHASE 2</p> <p>Layout & Longitudinal Section: STREET 4B - CH 0 TO CH 48</p>	<p>Scale: HCR 1:1000 VERT 1:100</p> <p>Chattanooga 0 to 456</p>	<p>Project Number: BME62123</p> <p>Project Name: ALDAYS INTERNAL STREET AND STORMWATER PHASE 2</p> <p>Layout & Longitudinal Section: STREET 4B - CH 0 TO CH 48</p>	<p>Client: The Municipal Manager, Bloemberg Municipality, Senekwane</p> <p>Address: P.O. Box 4342, Polokwane 0790</p> <p>Phone: 015 251 1262/1264</p> <p>Fax: 015 251 1363</p>	<p>Project: BME62123</p> <p>Phase: 2</p> <p>Sheet: 02</p> <p>Scale: A1</p>
--	--	---	--	--	--

STATION	CH	Y-COORD	X-COORD	BEARING	LENGTH
1107+00	1	1303.55	1088.74	348.24	0.000
1107+05	1	1303.55	1088.74	348.24	0.000
1107+10	1	1303.55	1088.74	348.24	0.000
1107+15	1	1303.55	1088.74	348.24	0.000
1107+20	1	1303.55	1088.74	348.24	0.000
1107+25	1	1303.55	1088.74	348.24	0.000
1107+30	1	1303.55	1088.74	348.24	0.000
1107+35	1	1303.55	1088.74	348.24	0.000
1107+40	1	1303.55	1088.74	348.24	0.000
1107+45	1	1303.55	1088.74	348.24	0.000
1107+50	1	1303.55	1088.74	348.24	0.000
1107+55	1	1303.55	1088.74	348.24	0.000
1107+60	1	1303.55	1088.74	348.24	0.000
1107+65	1	1303.55	1088.74	348.24	0.000
1107+70	1	1303.55	1088.74	348.24	0.000
1107+75	1	1303.55	1088.74	348.24	0.000
1107+80	1	1303.55	1088.74	348.24	0.000
1107+85	1	1303.55	1088.74	348.24	0.000
1107+90	1	1303.55	1088.74	348.24	0.000
1107+95	1	1303.55	1088.74	348.24	0.000
1108+00	1	1303.55	1088.74	348.24	0.000

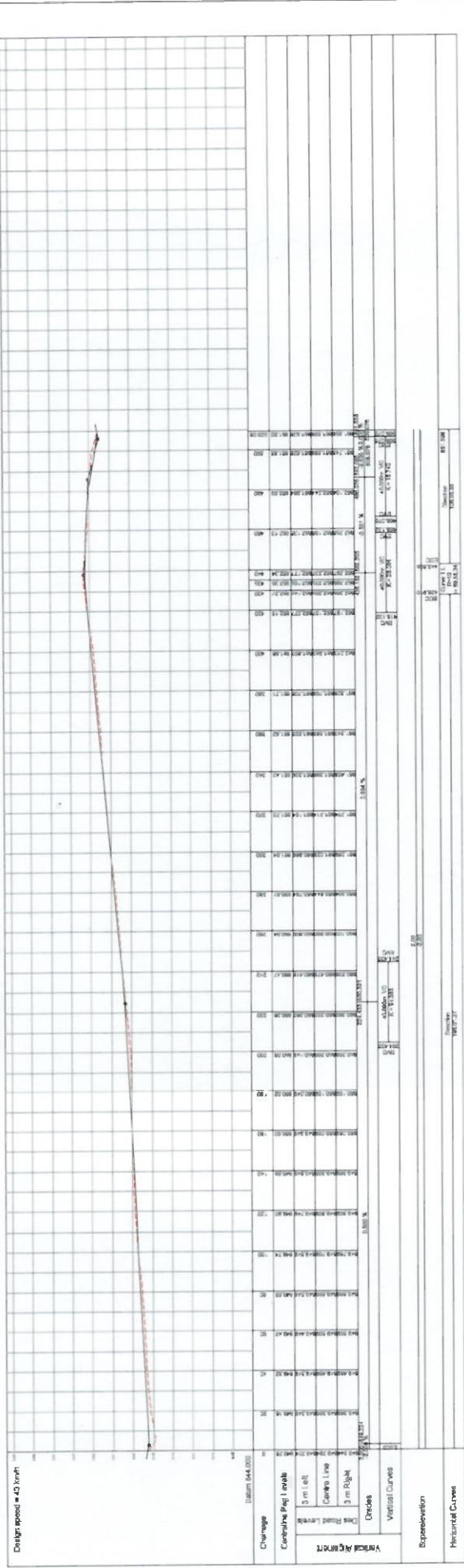
CHORD BEARING		CHORD DISTANCE		ARC BEARING		ARC DISTANCE	
STATION	CH	Y-COORD	X-COORD	BEARING	LENGTH	BEARING	LENGTH
1107+00	1	1303.55	1088.74	348.24	0.000	348.24	0.000
1107+05	1	1303.55	1088.74	348.24	0.000	348.24	0.000
1107+10	1	1303.55	1088.74	348.24	0.000	348.24	0.000
1107+15	1	1303.55	1088.74	348.24	0.000	348.24	0.000
1107+20	1	1303.55	1088.74	348.24	0.000	348.24	0.000
1107+25	1	1303.55	1088.74	348.24	0.000	348.24	0.000
1107+30	1	1303.55	1088.74	348.24	0.000	348.24	0.000
1107+35	1	1303.55	1088.74	348.24	0.000	348.24	0.000
1107+40	1	1303.55	1088.74	348.24	0.000	348.24	0.000
1107+45	1	1303.55	1088.74	348.24	0.000	348.24	0.000
1107+50	1	1303.55	1088.74	348.24	0.000	348.24	0.000
1107+55	1	1303.55	1088.74	348.24	0.000	348.24	0.000
1107+60	1	1303.55	1088.74	348.24	0.000	348.24	0.000
1107+65	1	1303.55	1088.74	348.24	0.000	348.24	0.000
1107+70	1	1303.55	1088.74	348.24	0.000	348.24	0.000
1107+75	1	1303.55	1088.74	348.24	0.000	348.24	0.000
1107+80	1	1303.55	1088.74	348.24	0.000	348.24	0.000
1107+85	1	1303.55	1088.74	348.24	0.000	348.24	0.000
1107+90	1	1303.55	1088.74	348.24	0.000	348.24	0.000
1107+95	1	1303.55	1088.74	348.24	0.000	348.24	0.000
1108+00	1	1303.55	1088.74	348.24	0.000	348.24	0.000

BENCHMARK Coordinate List - WGS 28 LOCAL

MARK	Y-COORD	X-COORD	Z-COORD
A1	-11935.14	250664.977	869.064
A14	-11935.107	250669.97	847.978
A7	-1473.789	250719.257	852.765
CS022108	-11994.278	250581.783	850.923
CS022101	-1478.372	250591.333	851.802
CS022102	-11776.777	250706.638	846.832
CS022103	-11898.627	250718.083	857.219
CS022104	-11868.832	250664.315	867.769
CS022105	-12002.949	250674.868	849.897
CS022106	-11936.363	250504.833	847.967
CS022107	-11968.763	250647.878	849.554
CS022108	-11311.765	250681.168	847.465
CS022109	-11968.698	250706.740	849.880
CS022110	-11918.444	250718.954	856.004
CS022111	-11772.278	250728.401	866.056
CS022112	-11888.703	250688.132	847.478
CS022113	-11293.678	250638.244	847.783
CS022114	-11293.346	250628.651	861.263



LAYOUT SCALE 1 : 1000



Chamagne 0 to 500 SCALE: HORIZ = 1:500 VERT = 1:100

<p>REVISIONS</p> <table border="1"> <thead> <tr> <th>NO.</th> <th>DATE</th> <th>DESCRIPTION</th> </tr> </thead> <tbody> <tr> <td>1</td> <td>2024-08-27</td> <td>ISSUED FOR PERMIT</td> </tr> </tbody> </table>	NO.	DATE	DESCRIPTION	1	2024-08-27	ISSUED FOR PERMIT	<p>CLIENT BILIBERTO MUNICIPALITY</p> <p>PROJECT ALLDAYS INTERNAL STREET AND STORMWATER LAYOUT & LONGITUDINAL SECTION: STREET 7, CH 8 TO CH 809</p>	<p>DESIGNER MORWA CONSULTANTS INC.</p> <p>PROJECT MANAGER JEFFREY W. MORROW</p> <p>DATE 2024-08-27</p>	<p>PROJECT NUMBER BMS07/1123</p> <p>SCALE AS SHOWN</p> <p>TITLE A1</p>
NO.	DATE	DESCRIPTION							
1	2024-08-27	ISSUED FOR PERMIT							
<p>CONTRACTOR [Blank]</p> <p>DATE [Blank]</p>	<p>PROJECT LOCATION [Blank]</p>	<p>PROJECT MANAGER [Blank]</p> <p>DATE [Blank]</p>	<p>PROJECT NUMBER [Blank]</p> <p>SCALE [Blank]</p> <p>TITLE [Blank]</p>						
<p>CONTRACTOR [Blank]</p> <p>DATE [Blank]</p>	<p>PROJECT LOCATION [Blank]</p>	<p>PROJECT MANAGER [Blank]</p> <p>DATE [Blank]</p>	<p>PROJECT NUMBER [Blank]</p> <p>SCALE [Blank]</p> <p>TITLE [Blank]</p>						

MORWA CONSULTANTS INC.

10100 Highway 7, Suite 200
 Polkowne, NB
 Telephone: (506) 887-1184
 Fax: (506) 887-1184

BILIBERTO MUNICIPALITY

The Municipal Manager
 Biliberto Municipality
 Biliberto, NB
 Telephone: (506) 887-1184
 Fax: (506) 887-1184

CONTRACTOR [Blank]

DATE [Blank]

PROJECT LOCATION [Blank]

PROJECT MANAGER [Blank]

DATE [Blank]

STREET 1

STREET 2



DATE	REVISIONS	REVISIONS	DATE
	1. FOR REVIEW	2. FOR REVIEW	
	3. FOR REVIEW	4. FOR REVIEW	
	5. FOR REVIEW	6. FOR REVIEW	
	7. FOR REVIEW	8. FOR REVIEW	
	9. FOR REVIEW	10. FOR REVIEW	
	11. FOR REVIEW	12. FOR REVIEW	


MORWA
 MUNICIPALITY OF RICHMOND
 1000 RICHMOND ST
 P.O. Box 4342
 POLDOWANE
 0796
 Tel: 016 291 1267/28 4
 Fax: 016 291 1383


BLAIBERG MUNICIPALITY
 The Municipal Manager
 Blaiberg Municipality
 Ervenhousstraat
 0796
 Telephone: (016) 866 7160
 Fax: (016) 866 0218

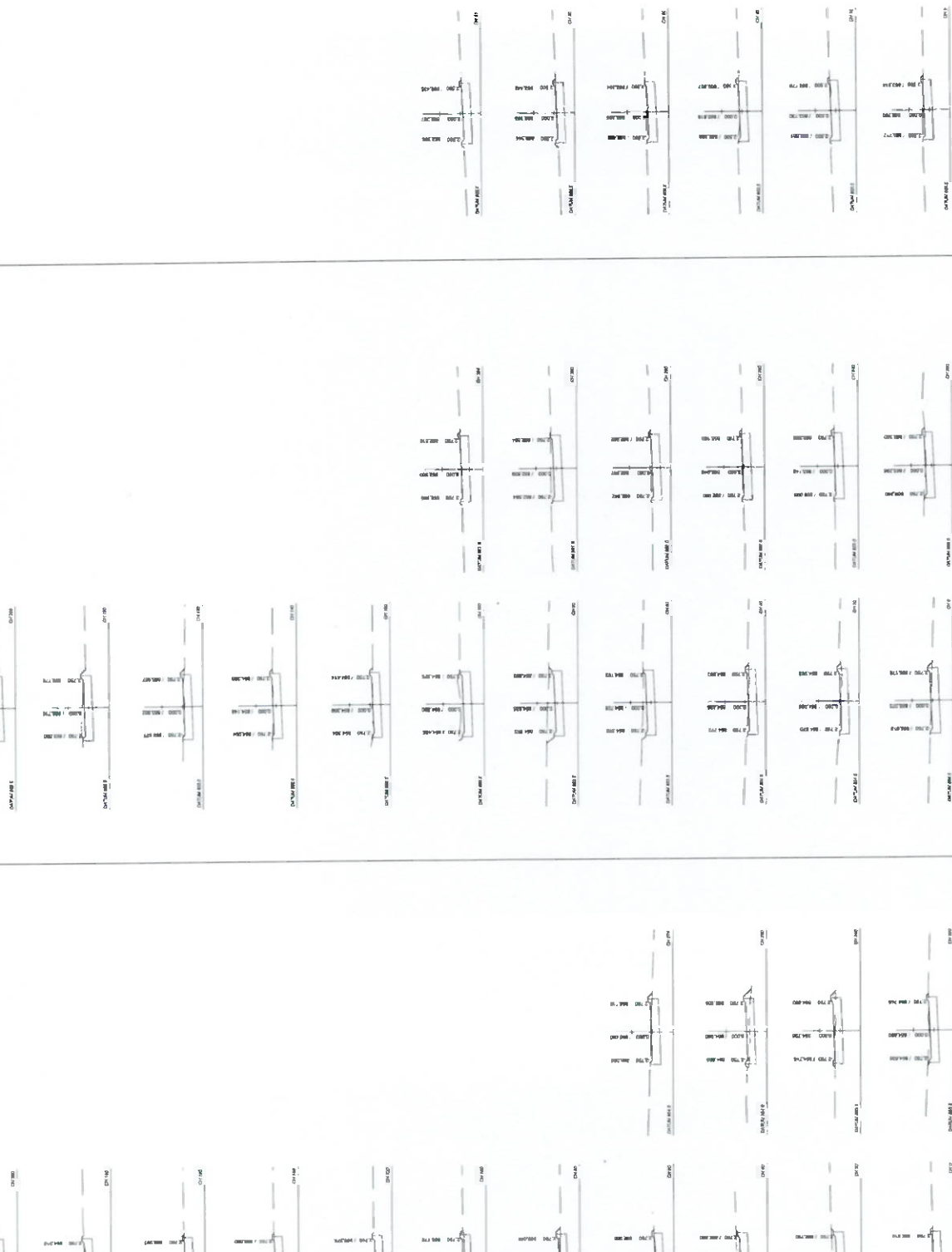
PROJECT NUMBER: **HW062123**
ALDAYS INTERNAL STREET AND STORMWATER
 STREET CROSS SECTIONS:
 STR 1 - CH 9 - CH 248 & STR 2 CH 9 - CH 489

MORWA DRAWING NUMBER	DATE	SCALE
MCE-248	11/11/06	1:100
MCE-249	11/11/06	1:100
MCE-250	11/11/06	1:100
MCE-251	11/11/06	1:100
MCE-252	11/11/06	1:100
MCE-253	11/11/06	1:100
MCE-254	11/11/06	1:100
MCE-255	11/11/06	1:100
MCE-256	11/11/06	1:100
MCE-257	11/11/06	1:100
MCE-258	11/11/06	1:100
MCE-259	11/11/06	1:100
MCE-260	11/11/06	1:100
MCE-261	11/11/06	1:100
MCE-262	11/11/06	1:100
MCE-263	11/11/06	1:100
MCE-264	11/11/06	1:100
MCE-265	11/11/06	1:100
MCE-266	11/11/06	1:100
MCE-267	11/11/06	1:100
MCE-268	11/11/06	1:100
MCE-269	11/11/06	1:100
MCE-270	11/11/06	1:100
MCE-271	11/11/06	1:100
MCE-272	11/11/06	1:100
MCE-273	11/11/06	1:100
MCE-274	11/11/06	1:100
MCE-275	11/11/06	1:100
MCE-276	11/11/06	1:100
MCE-277	11/11/06	1:100
MCE-278	11/11/06	1:100
MCE-279	11/11/06	1:100
MCE-280	11/11/06	1:100
MCE-281	11/11/06	1:100
MCE-282	11/11/06	1:100
MCE-283	11/11/06	1:100
MCE-284	11/11/06	1:100
MCE-285	11/11/06	1:100
MCE-286	11/11/06	1:100
MCE-287	11/11/06	1:100
MCE-288	11/11/06	1:100
MCE-289	11/11/06	1:100
MCE-290	11/11/06	1:100
MCE-291	11/11/06	1:100
MCE-292	11/11/06	1:100
MCE-293	11/11/06	1:100
MCE-294	11/11/06	1:100
MCE-295	11/11/06	1:100
MCE-296	11/11/06	1:100
MCE-297	11/11/06	1:100
MCE-298	11/11/06	1:100
MCE-299	11/11/06	1:100
MCE-300	11/11/06	1:100

STREET 6

STREET 3B

STREET 3A



PROJECT NUMBER: B082173
ALLDAYS INTERNAL STREET AND STORMWATER PHASE 2
STREET CROSS SECTIONS: STR 6 - CH 274 & STR 3B CH 0 - CH 304 & STR 3 - CH 0 - CH 81

REVISIONS

NO.	DESCRIPTION	DATE
1	ISSUED FOR PERMITS	01/15/2024
2	FOR CONSTRUCTION	01/15/2024

SCALE: 1" = 10'

DATE: 01/15/2024

PROJECT: B082173

CLIENT: BLOUJERS MUNICIPALITY

DESIGNER: MORWA ENGINEERING INC.

BLOUJERS MUNICIPALITY
 The Municipal Manager
 Bloujers Municipality
 Corner KwaZulu
 0798

Telephone: (015) 658 1100
Fax: (015) 658 0288

MORWA ENGINEERING INC.

Geoffrey van Rensburg SA
 P. O. Box 4342
 Polokwane
 0798

Telephone: 015 251 1262/264
Fax: 015 251 1383

RESPONSIBLE PERSON: J.M. Mokoena

DATE: 01/15/2024

REVISIONS:

NO.	DESCRIPTION	DATE
1	ISSUED FOR PERMITS	01/15/2024
2	FOR CONSTRUCTION	01/15/2024

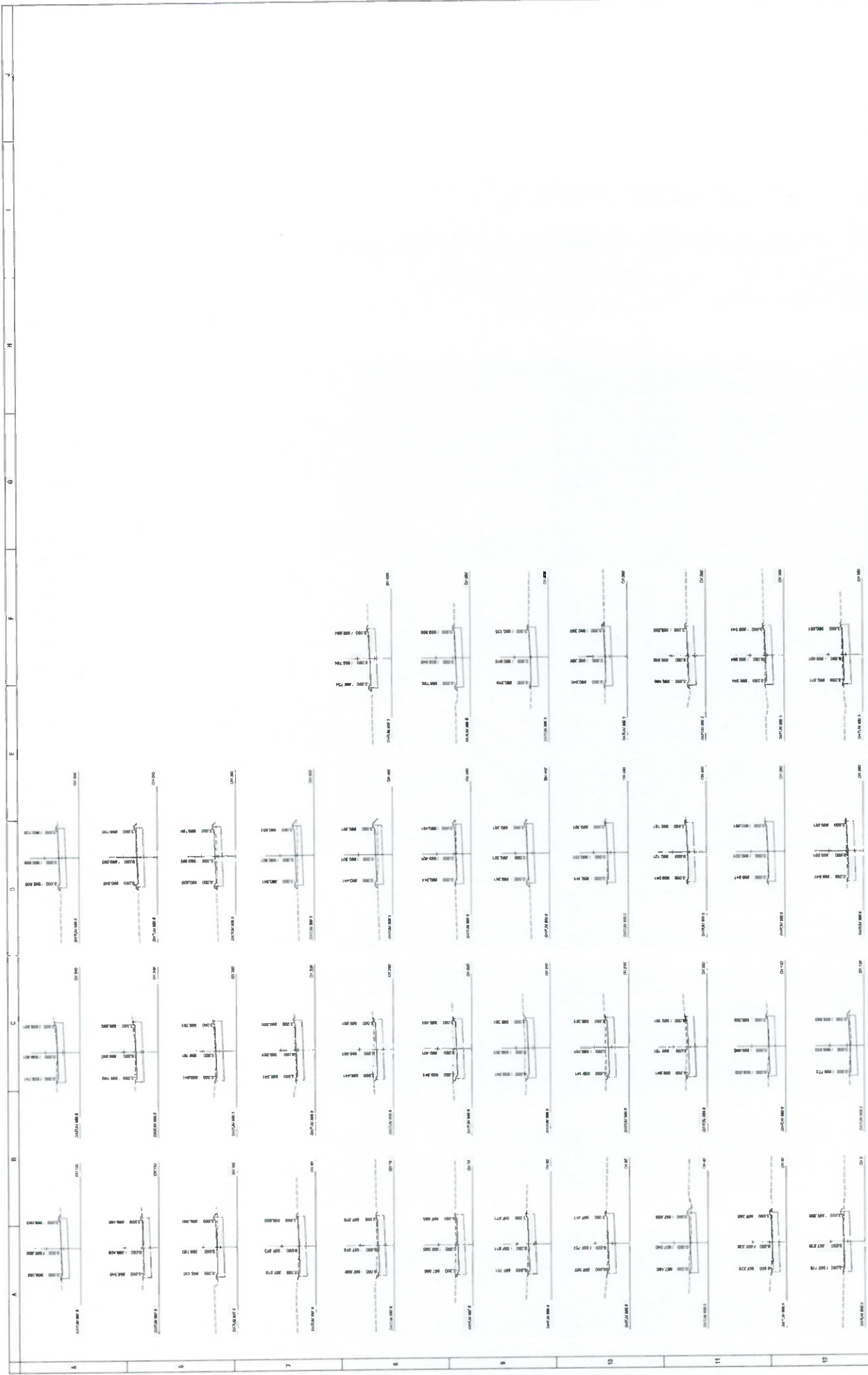
SCALE: 1" = 10'

DATE: 01/15/2024

PROJECT: B082173

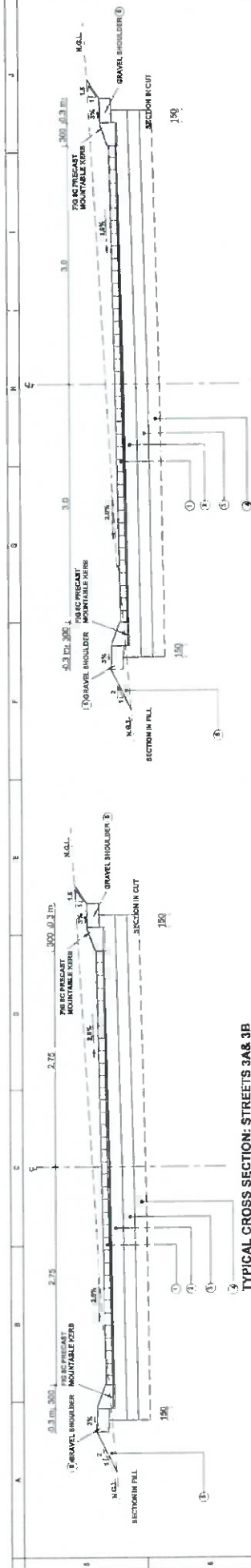
CLIENT: BLOUJERS MUNICIPALITY

DESIGNER: MORWA ENGINEERING INC.

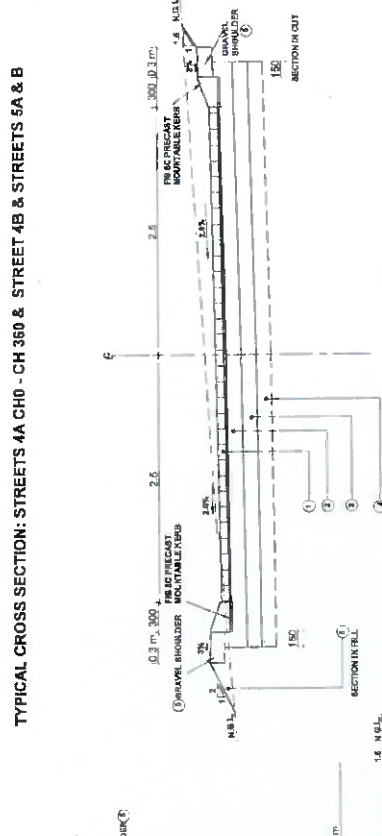


<p>MORWA Municipal Office of Road Works</p>	<p>BLOIBERG MUNICIPALITY The Municipal Manager Boulevard Municipality Schwarzenstein 07508</p>	<p>CLIENT 90 Jahre von Neuburg 20p P.O. Box 4342 POLDKOWNE 07508</p>	<p>PROJECT NUMBER: BM021023 PHASE 2 STREET CROSS SECTIONS: 8 STREET 305: CH 0 - CH 1305</p>	<p>REVISION</p> <table border="1" style="width: 100%; border-collapse: collapse;"> <tr> <th>NO.</th> <th>DESCRIPTION</th> <th>DATE</th> </tr> <tr> <td> </td> <td> </td> <td> </td> </tr> </table>	NO.	DESCRIPTION	DATE			
NO.	DESCRIPTION	DATE								
<p>DATE: _____</p> <p>DESIGNER: _____</p> <p>CHECKER: _____</p> <p>DATE: _____</p>	<p>DATE: _____</p> <p>DESIGNER: _____</p> <p>CHECKER: _____</p> <p>DATE: _____</p>	<p>DATE: _____</p> <p>DESIGNER: _____</p> <p>CHECKER: _____</p> <p>DATE: _____</p>	<p>DATE: _____</p> <p>DESIGNER: _____</p> <p>CHECKER: _____</p> <p>DATE: _____</p>							

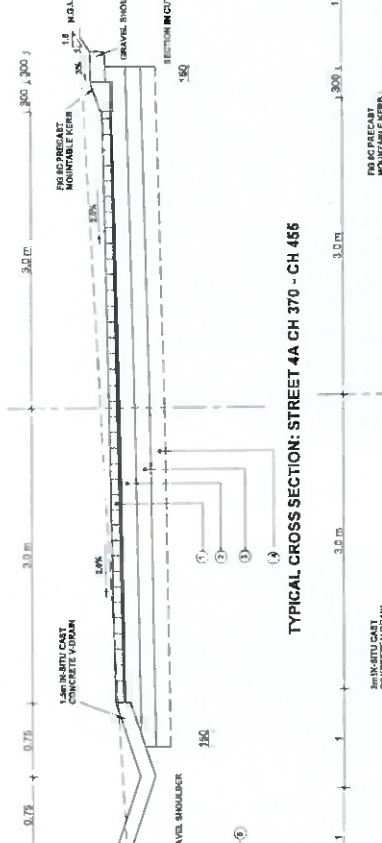




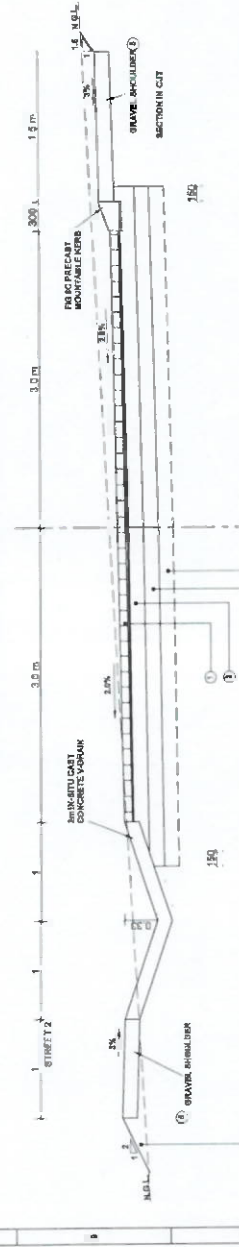
TYPICAL CROSS SECTION: STREETS 3A & 3B



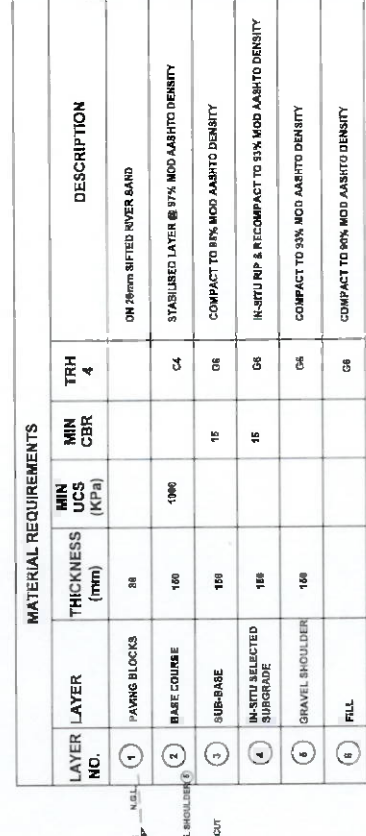
TYPICAL CROSS SECTION: STREETS 4A CH0 - CH 360 & STREET 4B & STREETS 5A & B



TYPICAL CROSS SECTION: STREET 4A CH 370 - CH 485



TYPICAL CROSS SECTION: STREET 2: CH 370 - END

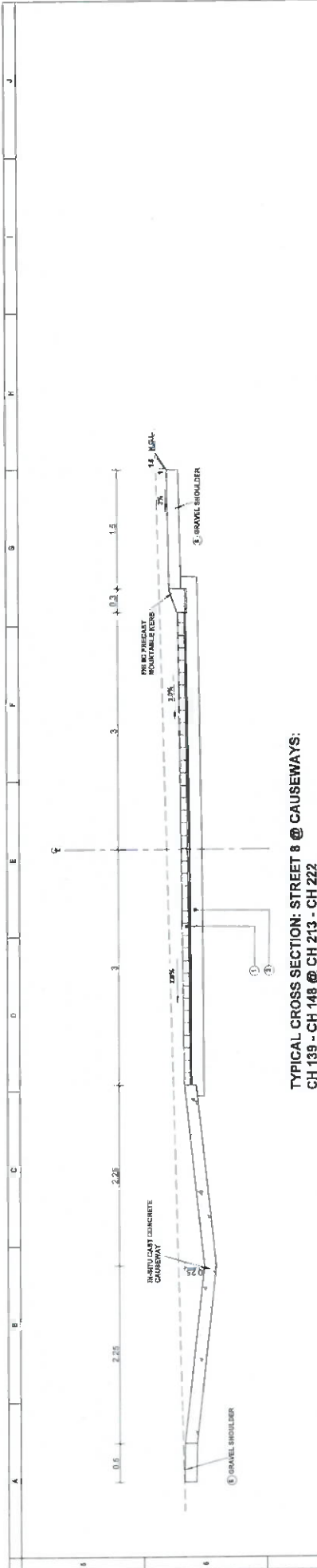


TYPICAL CROSS SECTION: STREET 1 & STREET 2: CH 0-CH370 & STREET 7

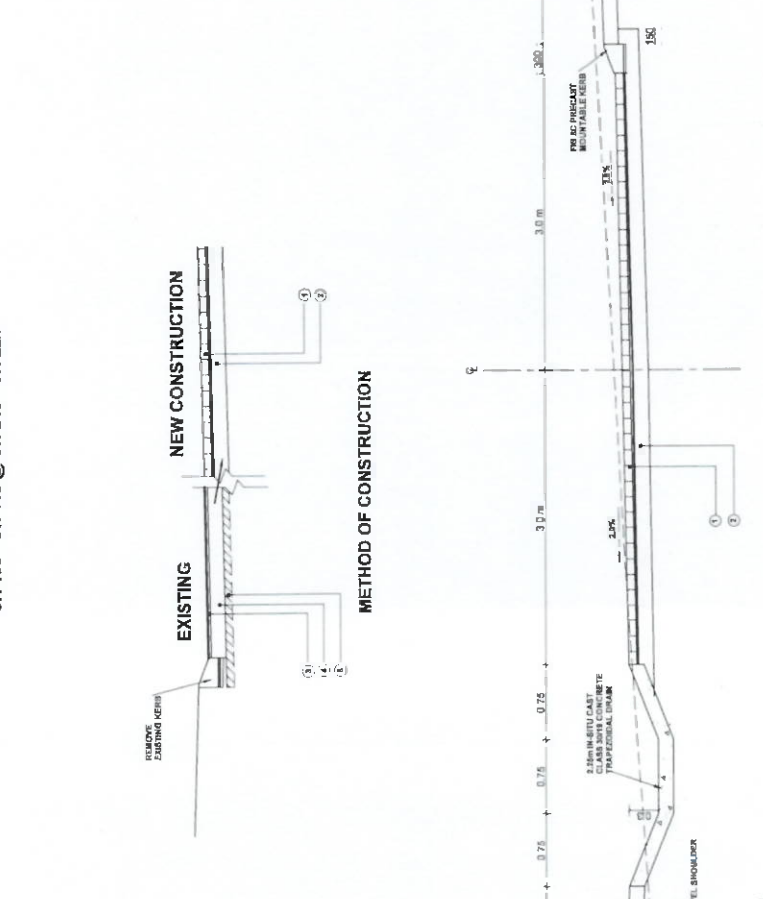
LAYER NO.	LAYER	THICKNESS (mm)	MIN UCS (KPa)	MIN CBR	TRH	DESCRIPTION
1	PAVING BLOCKS	38			4	ON 20mm SIFTED RIVER SAND
2	BASE COURSE	100	1080		C4	STABILISED LAYER @ 97% MOD ASHTO DENSITY
3	SUB-BASE	100		15	G6	COMPACT TO 8% MOD ASHTO DENSITY
4	IN-SITU SELECTED SUBGRADE	100		15	G6	IN-SITU RIP & RECOMPACT TO 5% MOD ASHTO DENSITY
5	GRAVEL SHOULDER	100			G6	COMPACT TO 9% MOD ASHTO DENSITY
6	FILL				G6	COMPACT TO 6% MOD ASHTO DENSITY

MATERIAL REQUIREMENTS

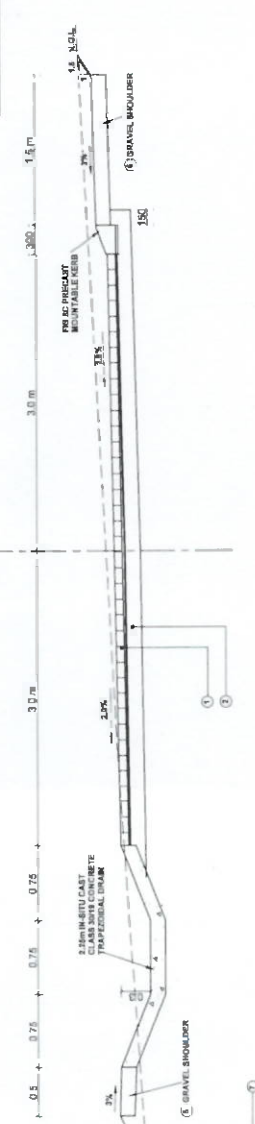
<p>RESPONSIBLE PERSON</p> <p>DESIGN: MR BISHOP</p> <p>CHECKED: MR BISHOP</p> <p>DATE: _____</p>	<p>CLIENT</p> <p>DATE: _____</p>	<p>PROJECT NUMBER: BM062123</p> <p>ALLDAYS INTERNAL STREET AND STORMWATER PHASE 2</p> <p>TYPICAL CROSS SECTION & PAVEMENT DESIGN: STREETS 1 TO 7</p>	<p>MORWA MUNICIPALITY</p> <p>The Municipal Manager P.O. Box 4342 Pretoria 0001</p> <p>MORWA</p> <p>Municipal Engineering</p> <p>Telephone: (015) 865 7108 Facsimile: (015) 865 8215</p>	<p>SCALE</p> <p>1:50</p> <p>DATE</p> <p>15/03/2024</p>
--	---	---	---	--



TYPICAL CROSS SECTION: STREET 8 @ CAUSEWAYS:
CH 135 - CH 148 @ CH 213 - CH 222

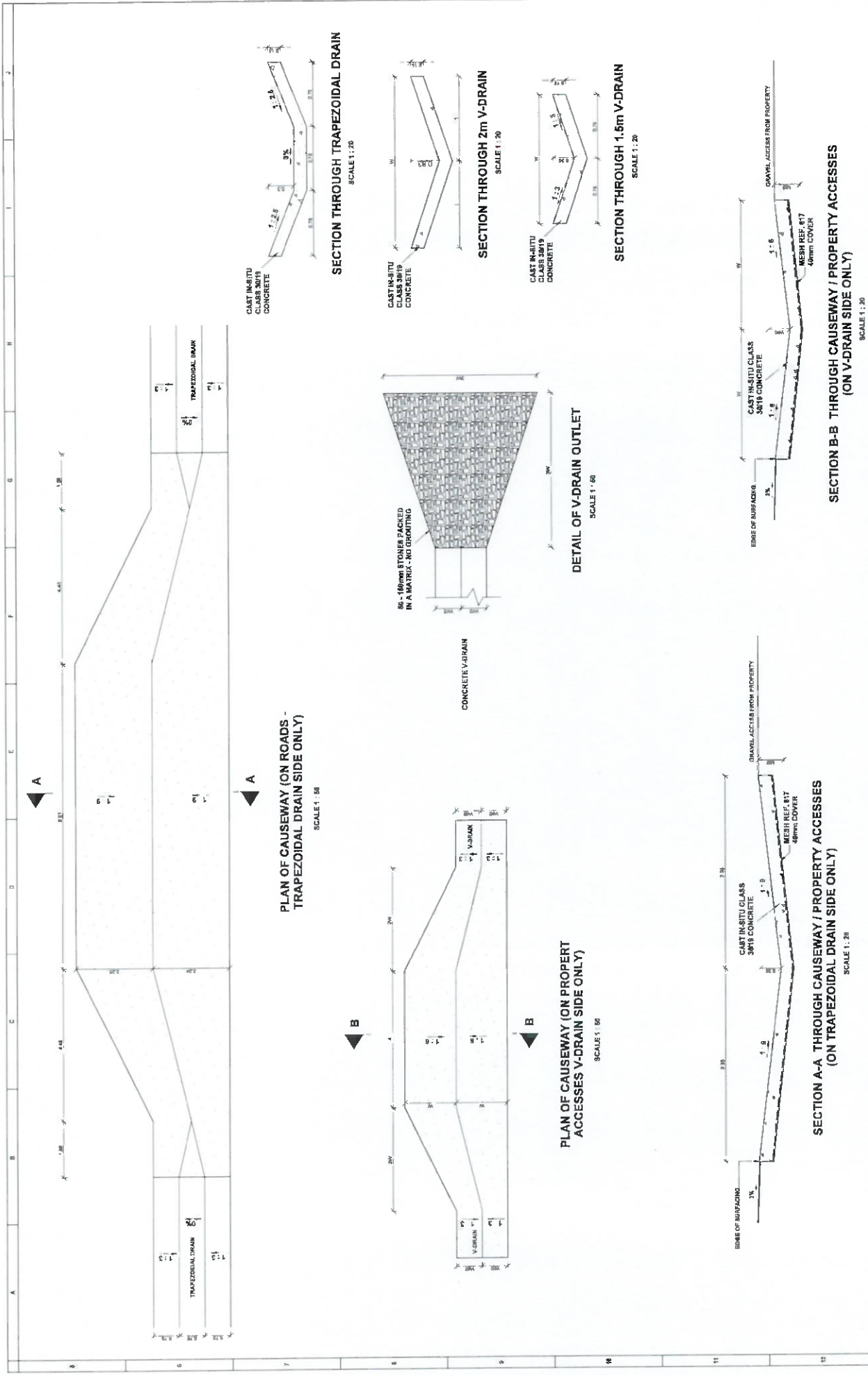


MATERIAL REQUIREMENTS						
LAYER NO.	LAYER	THICKNESS (mm)	MIN UCS (MPa)	TRH	MIN CBR	DESCRIPTION
1	Base PAVING BLOCKS OR 20mm RIVER SAND			4		
2	BASE COURSE FROM STOCKPILE	100	1000			STABILISED LAYER @ 8% MOD AASHTO DENSITY
3	REMOVE EX. SURFACING 30mm	30				
4	REMOVE EX. BASE AND STOCKPILE	100				
5	CUT AND SOIL FROM EXISTING ROAD LAYER	75				
6	GRAVEL SHOULDER	150			08	COMPACT TO 85% MOD AASHTO DENSITY
7	FILL	100			08	COMPACT TO 85% MOD AASHTO DENSITY

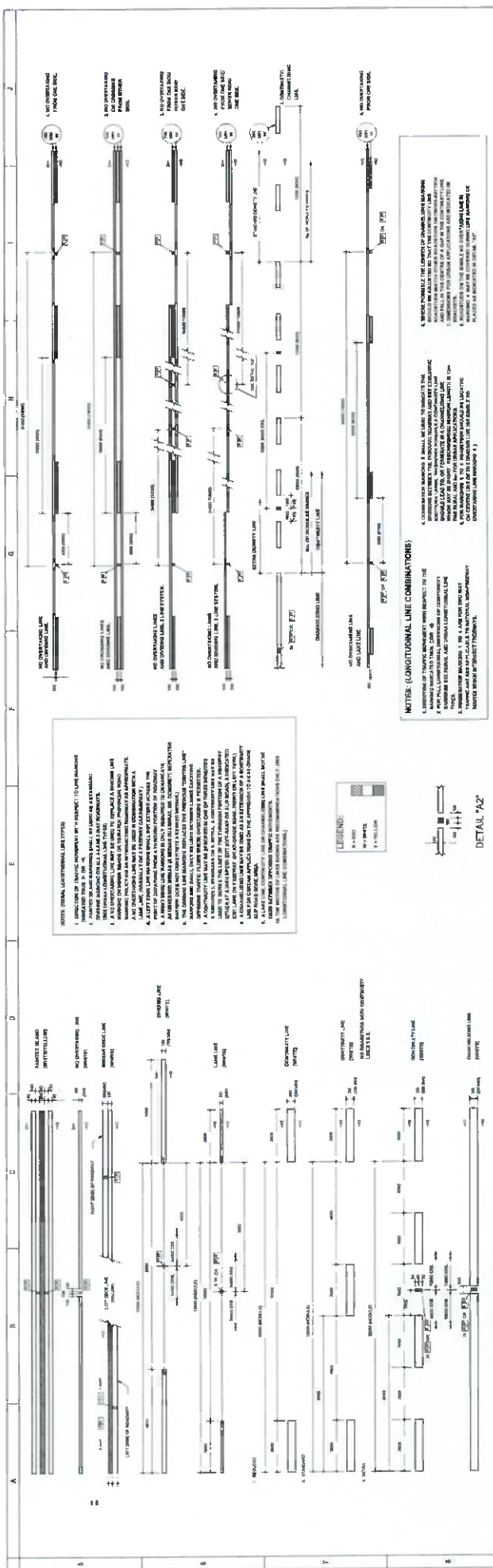


TYPICAL CROSS SECTION: STREET 8: CH 0 - END (EXCEPT AT CAUSEWAYS)

 <p>MORWA Municipality of Rumbung</p>		<p>DATE: _____</p>	
<p>SENIOR ENGINEER: _____</p>		<p>DATE: _____</p>	
<p>DESIGNER: _____</p>		<p>DATE: _____</p>	
<p>CHECKER: _____</p>		<p>DATE: _____</p>	
<p>APPROVED: _____</p>		<p>DATE: _____</p>	
<p>PROJECT NUMBER: R1M02/123</p>		<p>DATE: _____</p>	
<p>PROJECT NAME: ALLDAYS INTERNAL STREET AND STORMWATER PHASE 2</p>		<p>DATE: _____</p>	
<p>TYPICAL CROSS SECTION & METHOD OF CONSTRUCTION: STREET 8</p>		<p>DATE: _____</p>	
<p>PROJECT NUMBER: R1M02/123</p>		<p>DATE: _____</p>	
<p>PROJECT NAME: ALLDAYS INTERNAL STREET AND STORMWATER PHASE 2</p>		<p>DATE: _____</p>	
<p>TYPICAL CROSS SECTION & METHOD OF CONSTRUCTION: STREET 8</p>		<p>DATE: _____</p>	
<p>PROJECT NUMBER: R1M02/123</p>		<p>DATE: _____</p>	
<p>PROJECT NAME: ALLDAYS INTERNAL STREET AND STORMWATER PHASE 2</p>		<p>DATE: _____</p>	
<p>TYPICAL CROSS SECTION & METHOD OF CONSTRUCTION: STREET 8</p>		<p>DATE: _____</p>	



<p>SECTION A-A THROUGH CAUSEWAY / PROPERTY ACCESSES (ON TRAPEZOIDAL DRAIN SIDE ONLY)</p> <p>SCALE 1 : 20</p>	<p>SECTION B-B THROUGH CAUSEWAY / PROPERTY ACCESSES (ON V-DRAIN SIDE ONLY)</p> <p>SCALE 1 : 20</p>	<p>DETAIL OF V-DRAIN OUTLET</p> <p>SCALE 1 : 60</p>	<p>SECTION THROUGH TRAPEZOIDAL DRAIN</p> <p>SCALE 1 : 20</p>	<p>SECTION THROUGH 2m V-DRAIN</p> <p>SCALE 1 : 20</p>	<p>SECTION THROUGH 1.5m V-DRAIN</p> <p>SCALE 1 : 20</p>	<p>PLAN OF CAUSEWAY (ON ROADS - TRAPEZOIDAL DRAIN SIDE ONLY)</p> <p>SCALE 1 : 50</p>	<p>PLAN OF CAUSEWAY (ON PROPERTY ACCESSES V-DRAIN SIDE ONLY)</p> <p>SCALE 1 : 50</p>
<p>DATE: _____</p> <p>SCALE: _____</p>	<p>DATE: _____</p> <p>SCALE: _____</p>	<p>DATE: _____</p> <p>SCALE: _____</p>	<p>DATE: _____</p> <p>SCALE: _____</p>	<p>DATE: _____</p> <p>SCALE: _____</p>	<p>DATE: _____</p> <p>SCALE: _____</p>	<p>DATE: _____</p> <p>SCALE: _____</p>	<p>DATE: _____</p> <p>SCALE: _____</p>
<p>DESIGNER: _____</p> <p>CHECKER: _____</p> <p>PROJECT: _____</p> <p>DATE: _____</p>	<p>DESIGNER: _____</p> <p>CHECKER: _____</p> <p>PROJECT: _____</p> <p>DATE: _____</p>	<p>DESIGNER: _____</p> <p>CHECKER: _____</p> <p>PROJECT: _____</p> <p>DATE: _____</p>	<p>DESIGNER: _____</p> <p>CHECKER: _____</p> <p>PROJECT: _____</p> <p>DATE: _____</p>	<p>DESIGNER: _____</p> <p>CHECKER: _____</p> <p>PROJECT: _____</p> <p>DATE: _____</p>	<p>DESIGNER: _____</p> <p>CHECKER: _____</p> <p>PROJECT: _____</p> <p>DATE: _____</p>	<p>DESIGNER: _____</p> <p>CHECKER: _____</p> <p>PROJECT: _____</p> <p>DATE: _____</p>	<p>DESIGNER: _____</p> <p>CHECKER: _____</p> <p>PROJECT: _____</p> <p>DATE: _____</p>
<p>PROJECT NUMBER: BMA02123</p> <p>PROJECT NAME: ALLDAYS INTERNAL STREET AND STONWATER PHASE 2</p> <p>CLIENT: BLOUBERS MUNICIPALITY</p> <p>DESIGNED BY: The Municipal Manager, Bloemfontein Municipality, P.O. Box 4342, Polokwane 0790</p> <p>DATE: 07/08/2024</p> <p>SCALE: 1:20</p>	<p>PROJECT NUMBER: BMA02123</p> <p>PROJECT NAME: ALLDAYS INTERNAL STREET AND STONWATER PHASE 2</p> <p>CLIENT: BLOUBERS MUNICIPALITY</p> <p>DESIGNED BY: The Municipal Manager, Bloemfontein Municipality, P.O. Box 4342, Polokwane 0790</p> <p>DATE: 07/08/2024</p> <p>SCALE: 1:20</p>	<p>PROJECT NUMBER: BMA02123</p> <p>PROJECT NAME: ALLDAYS INTERNAL STREET AND STONWATER PHASE 2</p> <p>CLIENT: BLOUBERS MUNICIPALITY</p> <p>DESIGNED BY: The Municipal Manager, Bloemfontein Municipality, P.O. Box 4342, Polokwane 0790</p> <p>DATE: 07/08/2024</p> <p>SCALE: 1:60</p>	<p>PROJECT NUMBER: BMA02123</p> <p>PROJECT NAME: ALLDAYS INTERNAL STREET AND STONWATER PHASE 2</p> <p>CLIENT: BLOUBERS MUNICIPALITY</p> <p>DESIGNED BY: The Municipal Manager, Bloemfontein Municipality, P.O. Box 4342, Polokwane 0790</p> <p>DATE: 07/08/2024</p> <p>SCALE: 1:20</p>	<p>PROJECT NUMBER: BMA02123</p> <p>PROJECT NAME: ALLDAYS INTERNAL STREET AND STONWATER PHASE 2</p> <p>CLIENT: BLOUBERS MUNICIPALITY</p> <p>DESIGNED BY: The Municipal Manager, Bloemfontein Municipality, P.O. Box 4342, Polokwane 0790</p> <p>DATE: 07/08/2024</p> <p>SCALE: 1:20</p>	<p>PROJECT NUMBER: BMA02123</p> <p>PROJECT NAME: ALLDAYS INTERNAL STREET AND STONWATER PHASE 2</p> <p>CLIENT: BLOUBERS MUNICIPALITY</p> <p>DESIGNED BY: The Municipal Manager, Bloemfontein Municipality, P.O. Box 4342, Polokwane 0790</p> <p>DATE: 07/08/2024</p> <p>SCALE: 1:20</p>	<p>PROJECT NUMBER: BMA02123</p> <p>PROJECT NAME: ALLDAYS INTERNAL STREET AND STONWATER PHASE 2</p> <p>CLIENT: BLOUBERS MUNICIPALITY</p> <p>DESIGNED BY: The Municipal Manager, Bloemfontein Municipality, P.O. Box 4342, Polokwane 0790</p> <p>DATE: 07/08/2024</p> <p>SCALE: 1:50</p>	<p>PROJECT NUMBER: BMA02123</p> <p>PROJECT NAME: ALLDAYS INTERNAL STREET AND STONWATER PHASE 2</p> <p>CLIENT: BLOUBERS MUNICIPALITY</p> <p>DESIGNED BY: The Municipal Manager, Bloemfontein Municipality, P.O. Box 4342, Polokwane 0790</p> <p>DATE: 07/08/2024</p> <p>SCALE: 1:50</p>



LONGITUDINAL LINE COMBINATIONS

NOTE: (LONGITUDINAL LINE COMBINATIONS)

1. DIRECTION OF TRAFFIC INDICATED BY 'TYPICAL' TO LINE MARKING

2. DIMENSIONS ARE IN METERS

3. ALL DIMENSIONS ARE TO CENTERLINE UNLESS OTHERWISE SPECIFIED

4. ALL DIMENSIONS ARE TO FACE UNLESS OTHERWISE SPECIFIED

5. ALL DIMENSIONS ARE TO FACE UNLESS OTHERWISE SPECIFIED

6. ALL DIMENSIONS ARE TO FACE UNLESS OTHERWISE SPECIFIED

7. ALL DIMENSIONS ARE TO FACE UNLESS OTHERWISE SPECIFIED

8. ALL DIMENSIONS ARE TO FACE UNLESS OTHERWISE SPECIFIED

9. ALL DIMENSIONS ARE TO FACE UNLESS OTHERWISE SPECIFIED

10. ALL DIMENSIONS ARE TO FACE UNLESS OTHERWISE SPECIFIED

11. ALL DIMENSIONS ARE TO FACE UNLESS OTHERWISE SPECIFIED

12. ALL DIMENSIONS ARE TO FACE UNLESS OTHERWISE SPECIFIED

13. ALL DIMENSIONS ARE TO FACE UNLESS OTHERWISE SPECIFIED

14. ALL DIMENSIONS ARE TO FACE UNLESS OTHERWISE SPECIFIED

15. ALL DIMENSIONS ARE TO FACE UNLESS OTHERWISE SPECIFIED

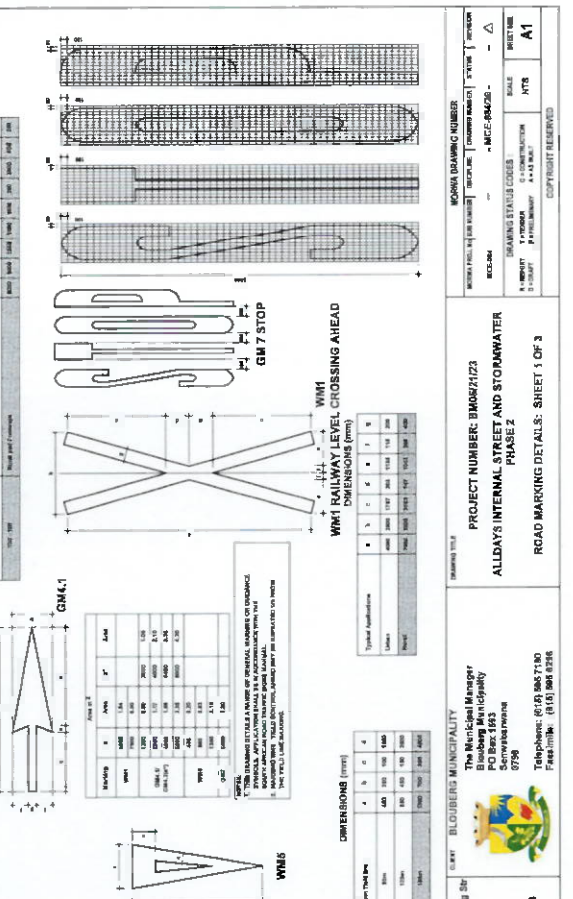
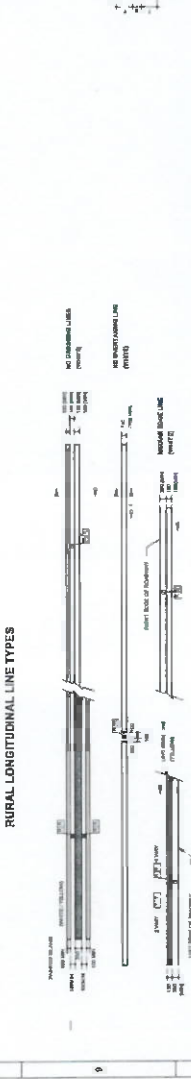
16. ALL DIMENSIONS ARE TO FACE UNLESS OTHERWISE SPECIFIED

17. ALL DIMENSIONS ARE TO FACE UNLESS OTHERWISE SPECIFIED

18. ALL DIMENSIONS ARE TO FACE UNLESS OTHERWISE SPECIFIED

19. ALL DIMENSIONS ARE TO FACE UNLESS OTHERWISE SPECIFIED

20. ALL DIMENSIONS ARE TO FACE UNLESS OTHERWISE SPECIFIED



WHT YIELD CONTROL AHEAD

1. DIRECTION OF TRAFFIC INDICATED BY 'TYPICAL' TO LINE MARKING

2. DIMENSIONS ARE IN METERS

3. ALL DIMENSIONS ARE TO CENTERLINE UNLESS OTHERWISE SPECIFIED

4. ALL DIMENSIONS ARE TO FACE UNLESS OTHERWISE SPECIFIED

5. ALL DIMENSIONS ARE TO FACE UNLESS OTHERWISE SPECIFIED

6. ALL DIMENSIONS ARE TO FACE UNLESS OTHERWISE SPECIFIED

7. ALL DIMENSIONS ARE TO FACE UNLESS OTHERWISE SPECIFIED

8. ALL DIMENSIONS ARE TO FACE UNLESS OTHERWISE SPECIFIED

9. ALL DIMENSIONS ARE TO FACE UNLESS OTHERWISE SPECIFIED

10. ALL DIMENSIONS ARE TO FACE UNLESS OTHERWISE SPECIFIED

11. ALL DIMENSIONS ARE TO FACE UNLESS OTHERWISE SPECIFIED

12. ALL DIMENSIONS ARE TO FACE UNLESS OTHERWISE SPECIFIED

13. ALL DIMENSIONS ARE TO FACE UNLESS OTHERWISE SPECIFIED

14. ALL DIMENSIONS ARE TO FACE UNLESS OTHERWISE SPECIFIED

15. ALL DIMENSIONS ARE TO FACE UNLESS OTHERWISE SPECIFIED

16. ALL DIMENSIONS ARE TO FACE UNLESS OTHERWISE SPECIFIED

17. ALL DIMENSIONS ARE TO FACE UNLESS OTHERWISE SPECIFIED

18. ALL DIMENSIONS ARE TO FACE UNLESS OTHERWISE SPECIFIED

19. ALL DIMENSIONS ARE TO FACE UNLESS OTHERWISE SPECIFIED

20. ALL DIMENSIONS ARE TO FACE UNLESS OTHERWISE SPECIFIED

WHT YIELD CONTROL AHEAD DIMENSIONS (mm)

Typical Application	A	B	C	D	E	F	G	H	I	J
Urban	1000	1000	1000	1000	1000	1000	1000	1000	1000	1000
Rural	1000	1000	1000	1000	1000	1000	1000	1000	1000	1000

WHT YIELD CONTROL AHEAD DIMENSIONS (mm)

1. DIRECTION OF TRAFFIC INDICATED BY 'TYPICAL' TO LINE MARKING

2. DIMENSIONS ARE IN METERS

3. ALL DIMENSIONS ARE TO CENTERLINE UNLESS OTHERWISE SPECIFIED

4. ALL DIMENSIONS ARE TO FACE UNLESS OTHERWISE SPECIFIED

5. ALL DIMENSIONS ARE TO FACE UNLESS OTHERWISE SPECIFIED

6. ALL DIMENSIONS ARE TO FACE UNLESS OTHERWISE SPECIFIED

7. ALL DIMENSIONS ARE TO FACE UNLESS OTHERWISE SPECIFIED

8. ALL DIMENSIONS ARE TO FACE UNLESS OTHERWISE SPECIFIED

9. ALL DIMENSIONS ARE TO FACE UNLESS OTHERWISE SPECIFIED

10. ALL DIMENSIONS ARE TO FACE UNLESS OTHERWISE SPECIFIED

11. ALL DIMENSIONS ARE TO FACE UNLESS OTHERWISE SPECIFIED

12. ALL DIMENSIONS ARE TO FACE UNLESS OTHERWISE SPECIFIED

13. ALL DIMENSIONS ARE TO FACE UNLESS OTHERWISE SPECIFIED

14. ALL DIMENSIONS ARE TO FACE UNLESS OTHERWISE SPECIFIED

15. ALL DIMENSIONS ARE TO FACE UNLESS OTHERWISE SPECIFIED

16. ALL DIMENSIONS ARE TO FACE UNLESS OTHERWISE SPECIFIED

17. ALL DIMENSIONS ARE TO FACE UNLESS OTHERWISE SPECIFIED

18. ALL DIMENSIONS ARE TO FACE UNLESS OTHERWISE SPECIFIED

19. ALL DIMENSIONS ARE TO FACE UNLESS OTHERWISE SPECIFIED

20. ALL DIMENSIONS ARE TO FACE UNLESS OTHERWISE SPECIFIED

PROJECT NUMBER: BMO62/123

ALLDAYS INTERNAL STREET AND STONMATER PHASE 2

ROAD MARKING DETAILS: SHEET 1 OF 3

MORWA MUNICIPALITY

86 GLENVIEW DRIVE, BLOEMSBURG 7601

P.O. BOX 4342, POLYORAME

SCHEURWATERING 0798

TELEPHONE: 051 251 132/2124

FAX: 051 251 1333

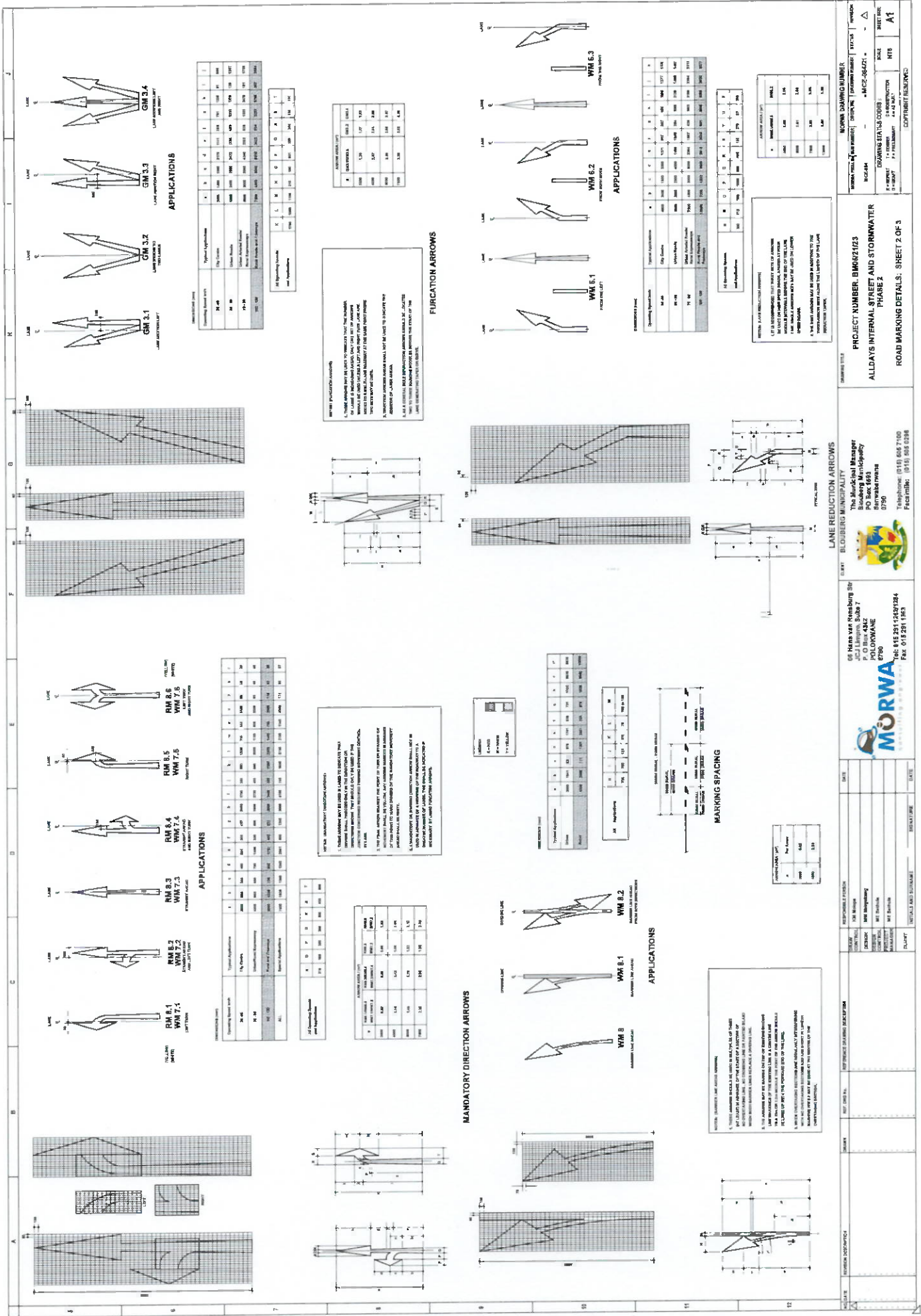
DATE: _____

DESIGNED BY: _____

CHECKED BY: _____

APPROVED BY: _____

DATE: _____



APPLICATIONS

Quantity	Typical Applications	1	2	3	4	5	6	7	8	9	10
24" W	City Streets	2000	1000	1000	1000	1000	1000	1000	1000	1000	1000
36" W	Major Arterials	1000	500	500	500	500	500	500	500	500	500
48" W	Interstates	500	250	250	250	250	250	250	250	250	250

APPLICATIONS

Quantity	Typical Applications	1	2	3	4	5	6	7	8	9	10
24" W	City Streets	2000	1000	1000	1000	1000	1000	1000	1000	1000	1000
36" W	Major Arterials	1000	500	500	500	500	500	500	500	500	500
48" W	Interstates	500	250	250	250	250	250	250	250	250	250

MANDATORY DIRECTION ARROWS

1. THESE ARROWS MAY BE USED TO INDICATE THAT THE THROUGH TRAFFIC MUST REMAIN IN THE THROUGH LANE AS THE THROUGH TRAFFIC APPROACHES A ROADWAY WITH A THROUGH LANE AND A THROUGH LANE WITH A STOPPED TRAFFIC SIGNAL.

2. THE THROUGH ARROW MUST BE USED TO INDICATE THAT THROUGH TRAFFIC MUST REMAIN IN THE THROUGH LANE AS THE THROUGH TRAFFIC APPROACHES A ROADWAY WITH A THROUGH LANE AND A THROUGH LANE WITH A STOPPED TRAFFIC SIGNAL.

3. THESE ARROWS MUST BE USED TO INDICATE THAT THROUGH TRAFFIC MUST REMAIN IN THE THROUGH LANE AS THE THROUGH TRAFFIC APPROACHES A ROADWAY WITH A THROUGH LANE AND A THROUGH LANE WITH A STOPPED TRAFFIC SIGNAL.

LANE REDUCTION ARROWS

1. THESE ARROWS MUST BE USED TO INDICATE THAT THE THROUGH TRAFFIC MUST REMAIN IN THE THROUGH LANE AS THE THROUGH TRAFFIC APPROACHES A ROADWAY WITH A THROUGH LANE AND A THROUGH LANE WITH A STOPPED TRAFFIC SIGNAL.

2. THE THROUGH ARROW MUST BE USED TO INDICATE THAT THROUGH TRAFFIC MUST REMAIN IN THE THROUGH LANE AS THE THROUGH TRAFFIC APPROACHES A ROADWAY WITH A THROUGH LANE AND A THROUGH LANE WITH A STOPPED TRAFFIC SIGNAL.

3. THESE ARROWS MUST BE USED TO INDICATE THAT THROUGH TRAFFIC MUST REMAIN IN THE THROUGH LANE AS THE THROUGH TRAFFIC APPROACHES A ROADWAY WITH A THROUGH LANE AND A THROUGH LANE WITH A STOPPED TRAFFIC SIGNAL.

FURCATION ARROWS

1. THESE ARROWS MUST BE USED TO INDICATE THAT THE THROUGH TRAFFIC MUST REMAIN IN THE THROUGH LANE AS THE THROUGH TRAFFIC APPROACHES A ROADWAY WITH A THROUGH LANE AND A THROUGH LANE WITH A STOPPED TRAFFIC SIGNAL.

2. THE THROUGH ARROW MUST BE USED TO INDICATE THAT THROUGH TRAFFIC MUST REMAIN IN THE THROUGH LANE AS THE THROUGH TRAFFIC APPROACHES A ROADWAY WITH A THROUGH LANE AND A THROUGH LANE WITH A STOPPED TRAFFIC SIGNAL.

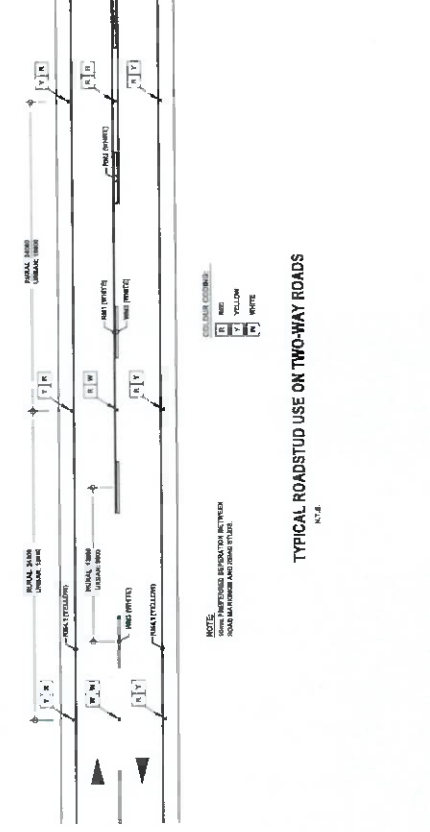
3. THESE ARROWS MUST BE USED TO INDICATE THAT THROUGH TRAFFIC MUST REMAIN IN THE THROUGH LANE AS THE THROUGH TRAFFIC APPROACHES A ROADWAY WITH A THROUGH LANE AND A THROUGH LANE WITH A STOPPED TRAFFIC SIGNAL.

PROJECT NUMBER: BMS/21023
ALLDAYS INTERNAL STREET AND STORMWATER PHASE 2
ROAD MARKING DETAILS, SHEET 2 OF 3

MORWA
 MORNINGSTAR CONSULTING GROUP
 1000 W. 10TH AVENUE, SUITE 100
 DENVER, CO 80202
 TEL: 303.733.7222 FAX: 303.733.7223
 WWW.MORWA.COM

BLUJBERG MUNICIPALITY
 The Municipal Manager
 Blouberg Municipality
 Blouberg
 7700
 Telephone: (011) 805 7100
 Facsimile: (011) 805 0288

DATE: 12/11/2011
SCALE: 1" = 1'-0"
PROJECT: BMS/21023
DRAWN BY: J. J. J. J.
CHECKED BY: J. J. J. J.
APPROVED BY: J. J. J. J.

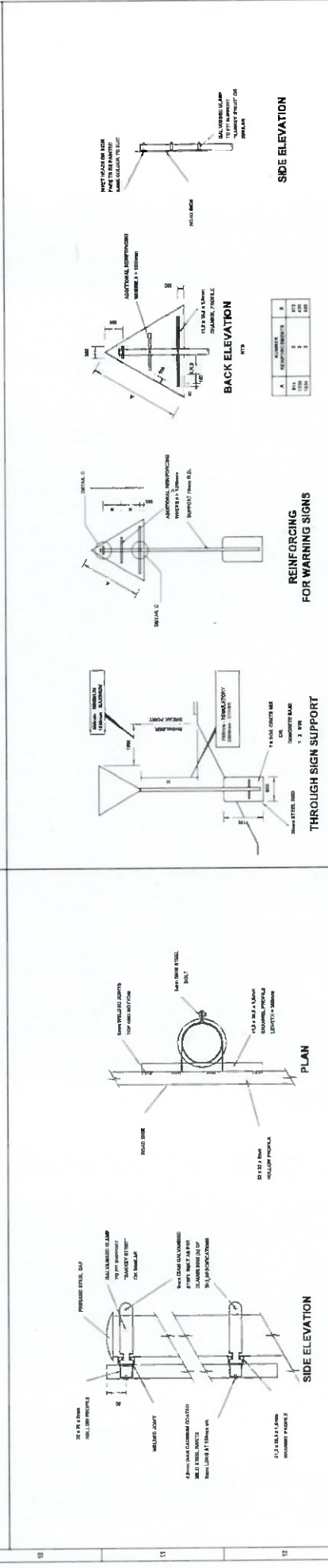
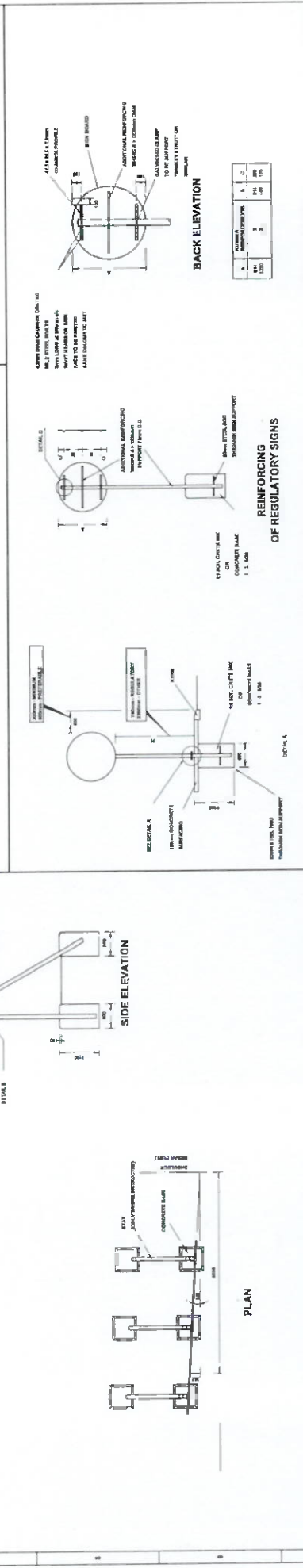
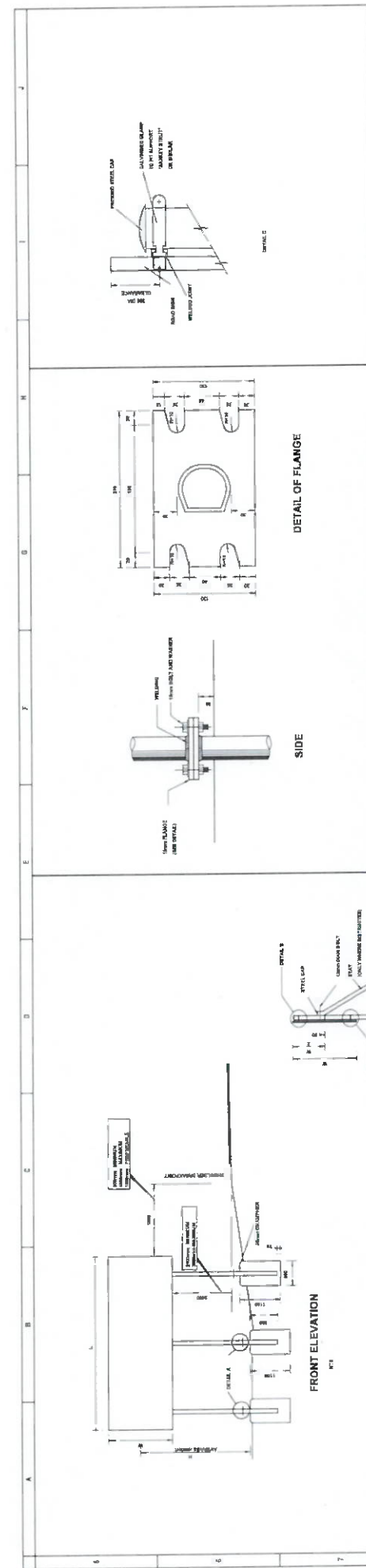


NOTES:

1. ROADSTUDS MUST OF S99 TYPE OR SIMILAR APPROVED
2. ONLY APPROVED MACHINES MAY APPLY ROAD MARKING PAINT.
3. PAINT SHALL ONLY BE APPLIED TO SURFACES THAT ARE CLEAN, DRY AND COMPLETELY FREE FROM ANY SOIL, GREASE, OIL, ACID OR ANY OTHER MATERIAL WHICH WILL BE DETRIMENTAL TO THE BOND BETWEEN PAINT AND SURFACE
4. ROAD MARKING SHALL BE COMPLETED BEFORE A SECTION OF ROAD IS OPENED TO TRAFFIC.



PROJECT NUMBER: BMS/24123 ALLDAYS INTERNAL STREET AND STORMWATER PHASE 2 ROAD MARKING DETAILS 3 of 3	 MORWA MOUNTAIN OVERTAKE ROADWAY WORKS 65 Hereford Road, Roseburg Shire P.O. Box 4342 POLYUNAWA QLD 4796 Tel: 015 231 232/234 Fax: 015 291 1583	The Municipal Manager Blooberg Municipality Roseburg Queensland 4796 Telephone: (015) 605 7100 Facsimile: (015) 605 8398	PROJECT NUMBER: BMS/24123 DRAWING NUMBER: BMS/24123 DRAWING TITLE: ROAD MARKING DETAILS 3 of 3 SCALE: A1 DATE: 2024
--	--	--	---



DATE	REVISIONS	NO.	DESCRIPTION

PROJECT NUMBER: 30025123	PROJECT TITLE
ALWAYS INTERNAL STREET AND STORMWATER PHASE 2	ROAD SIGN ERECTION DETAIL

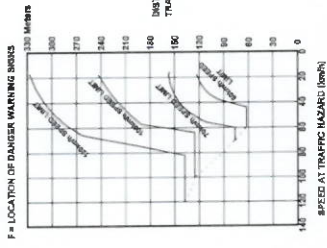
CLIENT	BLOUBERG MUNICIPALITY
DATE	15/05/2018
PROJECT	Always Internal Street and Stormwater Phase 2
PROJECT LOCATION	Always Internal Street and Stormwater Phase 2
PROJECT NO.	30025123
PROJECT NAME	Always Internal Street and Stormwater Phase 2
PROJECT ADDRESS	Always Internal Street and Stormwater Phase 2
PROJECT CONTACT	Always Internal Street and Stormwater Phase 2
PROJECT PHONE	Always Internal Street and Stormwater Phase 2
PROJECT FAX	Always Internal Street and Stormwater Phase 2
PROJECT EMAIL	Always Internal Street and Stormwater Phase 2
PROJECT WEBSITE	Always Internal Street and Stormwater Phase 2

PROJECT NUMBER: 30025123	PROJECT TITLE
ALWAYS INTERNAL STREET AND STORMWATER PHASE 2	ROAD SIGN ERECTION DETAIL

CLIENT	BLOUBERG MUNICIPALITY
DATE	15/05/2018
PROJECT	Always Internal Street and Stormwater Phase 2
PROJECT LOCATION	Always Internal Street and Stormwater Phase 2
PROJECT NO.	30025123
PROJECT NAME	Always Internal Street and Stormwater Phase 2
PROJECT ADDRESS	Always Internal Street and Stormwater Phase 2
PROJECT CONTACT	Always Internal Street and Stormwater Phase 2
PROJECT PHONE	Always Internal Street and Stormwater Phase 2
PROJECT FAX	Always Internal Street and Stormwater Phase 2
PROJECT EMAIL	Always Internal Street and Stormwater Phase 2
PROJECT WEBSITE	Always Internal Street and Stormwater Phase 2

PROJECT NUMBER: 30025123	PROJECT TITLE
ALWAYS INTERNAL STREET AND STORMWATER PHASE 2	ROAD SIGN ERECTION DETAIL

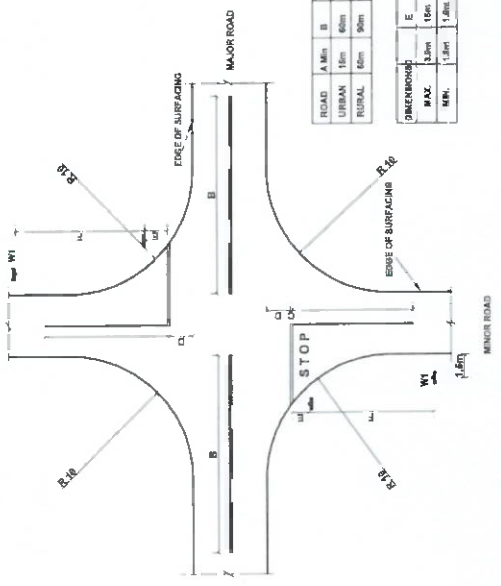
CLIENT	BLOUBERG MUNICIPALITY
DATE	15/05/2018
PROJECT	Always Internal Street and Stormwater Phase 2
PROJECT LOCATION	Always Internal Street and Stormwater Phase 2
PROJECT NO.	30025123
PROJECT NAME	Always Internal Street and Stormwater Phase 2
PROJECT ADDRESS	Always Internal Street and Stormwater Phase 2
PROJECT CONTACT	Always Internal Street and Stormwater Phase 2
PROJECT PHONE	Always Internal Street and Stormwater Phase 2
PROJECT FAX	Always Internal Street and Stormwater Phase 2
PROJECT EMAIL	Always Internal Street and Stormwater Phase 2
PROJECT WEBSITE	Always Internal Street and Stormwater Phase 2



F = LOCATION OF DANGER WARNING SIGNS

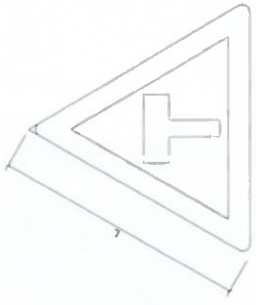
ROAD	A Min	B	C Min
URBAN	15m	60m	1.5m
RURAL	60m	50m	2.5m

DIMENSION	E
MAX	3.5m
MIN	1.5m



CROSS SECTION DETAIL

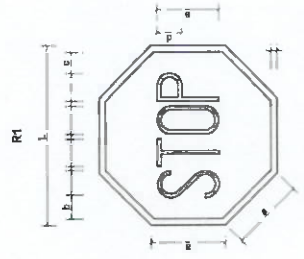
W1



RADIUS = 12

TRW184	a	b	c	d
914	25	32	114	85

T-JUNCTION



R1
 BORDER AND LEGEND: WHITE REFLECTORISED
 BACKGROUND: RED REFLECTORISED
 LETTERS: SERIES C

L	a	b	c	d	e	f	g	h	i	j	k	l	m	n	o	p	q	r	s	t	u	v	w	x	y	z	
340	108	27	16	63	127																						

STOP SIGN DETAIL

NOTE:
 THE ACTUAL SPEED LIMIT TO BE
 USED WILL BE SPECIFIED ON
 SITE BY THE ENGINEER.
**SPEED LIMIT
 (R14)**



600

<p>MORWA MUNICIPALITY OF RIVERBURG P.O. Box 4342 POLORWANE 0796 Tel: 012 251 1282/2284 Fax: 012 251 1333</p>	<p>CLINT BLOUWER, MUNICIPALITY The Municipal Manager Bloemfontein Municipality 2000 0796 Telephone: (012) 266 7492 Facsimile: (012) 266 2210</p>	<p>PROJECT NUMBER: BM082123 ALLDAYS INTERNAL STREET AND STORMWATER PHASE 2 STOP AND ROAD SIGN DETAILS</p>	<p>MORWA DRAWING NUMBER DRAWING TITLE: STOP AND ROAD SIGN DETAILS DRAWING NUMBER: BM082123 PROJECT NUMBER: BM082123 DATE: 15/08/2018 DRAWN BY: M. M. M. M. CHECKED BY: M. M. M. M. APPROVED BY: M. M. M. M.</p>
---	---	--	---

RULES

1. Typefaces to be used shall be Helvetica medium.
2. Size of lettering and dimensions shall be indicated on the drawings and shall be strictly adhered to.
3. Height of the board depends on location of the sign. All professional services are to be shown.
4. Project name and address shall be written in Helvetica medium on a white background surrounding lettering shall be in middle blue.
5. Professional grade and company names shall be in black on white.
6. The board shall conform to the dimensions indicated on the drawing.

NOTA: Paint colors are based on Pantone colors. White is P 11-10-100. Middle blue is P 28-40-60. Black is P 28-00-00. Helvetica medium is Helvetica (acrylic road sign paint).

BLOUBERG MUNICIPALITY

PROJECT NUMBER: BM05/21/23

ALLDAYS INTERNAL STREET AND STORMWATER PHASE 2

Tel: (015) 605 7100
Fax: (015) 605 0286

Dark Blue Letters on White Background

Tel: 015 291 1262/1284
P. O Box 4342
POLOKWANE
0700

Dark Blue Letters on Grey Background

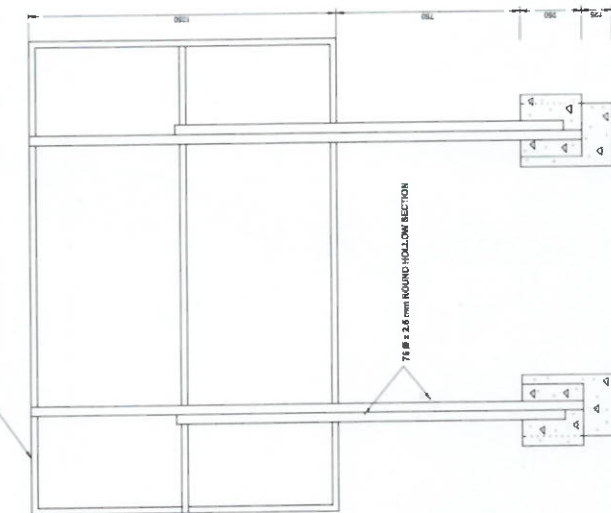
Dark Blue Letters on Grey Background

CONTRACTORS: TEL:
REGISTERED NAME OF CONTRACTORS

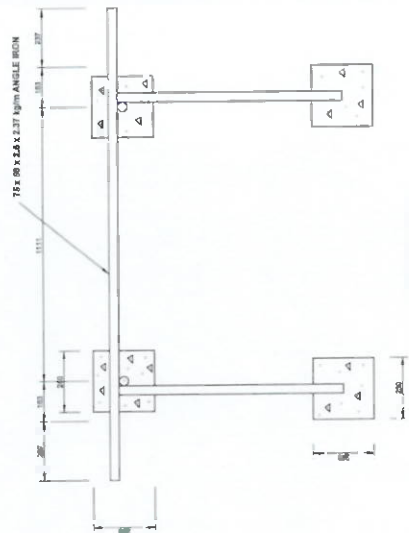
MORWA CONSULTING ENGINEERS

Dark Blue Letters on Grey Background

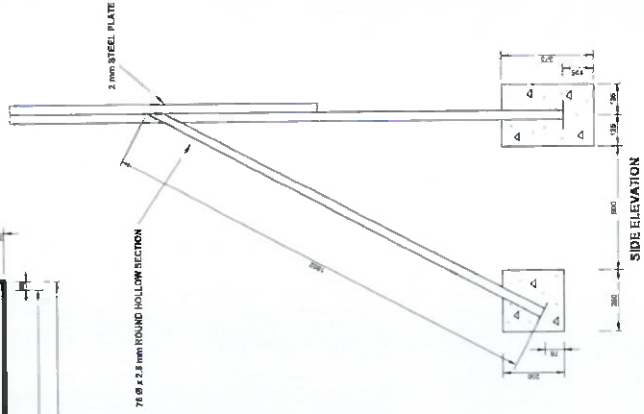
CONTRACTORS: TEL:
REGISTERED NAME OF CONTRACTORS



BACK ELEVATION
SCALE 1 : 10



TOP ELEVATION
SCALE 1 : 10



SIDE ELEVATION

SIGNBOARD
SCALE 1 : 10

E

HELIX LETTERING FOR PROJECT AND REGISTERED NAME OF CONTRACTORS

E

HELIX LETTERING FOR PROJECT AND REGISTERED NAME OF CONTRACTORS

E

HELIX LETTERING FOR PROJECT AND REGISTERED NAME OF CONTRACTORS

PROJECT NUMBER: BM05/21/23	PROJECT TITLE: ALLDAYS INTERNAL STREET AND STORMWATER PHASE 2	CLIENT: BLOUBERG MUNICIPALITY	DATE: _____	DESIGNED BY: _____	DATE: _____
CONTRACT NUMBER: BM05/21/23	CONTRACT NAME: CONTRACT NAME BOARD	PROJECT MANAGER: The Municipal Manager Blouberg Municipality Strydomstraat 8796 Tel: (015) 605 7100 Fax: (015) 605 0286	DATE: _____	DESIGNED BY: _____	DATE: _____
CONTRACT NUMBER: BM05/21/23	CONTRACT NAME: CONTRACT NAME BOARD	PROJECT MANAGER: The Municipal Manager Blouberg Municipality Strydomstraat 8796 Tel: (015) 605 7100 Fax: (015) 605 0286	DATE: _____	DESIGNED BY: _____	DATE: _____
CONTRACT NUMBER: BM05/21/23	CONTRACT NAME: CONTRACT NAME BOARD	PROJECT MANAGER: The Municipal Manager Blouberg Municipality Strydomstraat 8796 Tel: (015) 605 7100 Fax: (015) 605 0286	DATE: _____	DESIGNED BY: _____	DATE: _____